

Handout

Agenda Item 2

Date 8-1-19

Marin/Sonoma Mosquito and Vector Control District

The Marin/Sonoma Mosquito and Vector Control District, founded in 1915, protects the health and welfare of the communities it serves from Mosquitoes and vector-borne diseases by utilizing cost effective, environmentally responsible integrated vector management practices.

Phil Smith – District Manager

Erik Hawk - Assistant Manager

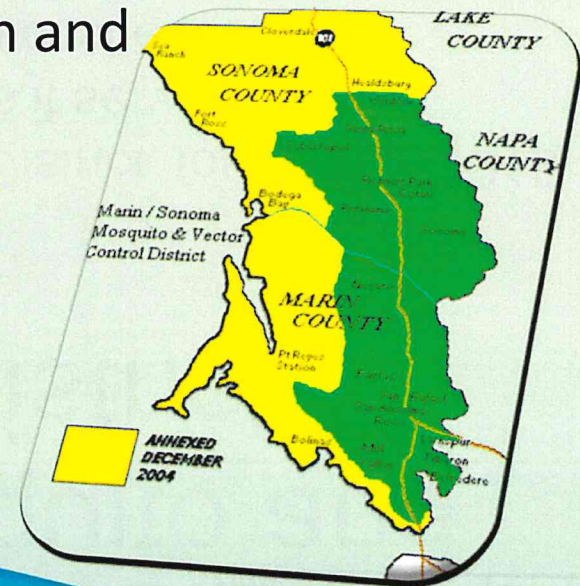
Marc Nadale – Field Supervisor



PROTECTING
PUBLIC HEALTH
SINCE 1915

Public Health – Public Service

- Service area includes all of Marin and Sonoma counties
 - 2,300 square miles
- Approximately 763,000 residents
- One of the largest vector control districts in California
- Significant diversity in mosquito habitats
 - 23 species of mosquitoes
- Operate in cooperative agreement with CDPH and under the auspices of the CA. Health and Safety Code.



PROTECTING
PUBLIC HEALTH
SINCE 1915

Integrated Vector Management



PROTECTING
PUBLIC HEALTH
SINCE 1915

Integrated Vector Management Surveillance



PROTECTING
PUBLIC HEALTH
SINCE 1915

Integrated Vector Management Source Reduction



PROTECTING
PUBLIC HEALTH
SINCE 1915

Integrated Vector Management Larval Control

Mosquito Larvicides - Proactive

- Goal to control mosquitoes in aquatic stage
 - Used when source reduction is underway, partially effective or not possible
- Larvicides very specific to mosquito larvae at label rates
 - Liquid and granular formulations
- Biological and bio-rational materials
- Decision making
 - Mosquito species
 - Stage in life cycle
 - Weather
 - Application method
 - Cost



Adulticide Application - Reactive



PROTECTING
PUBLIC HEALTH
SINCE 1915

LGVSD – Sources of Mosquito Production



PROTECTING
PUBLIC HEALTH
SINCE 1915

LGVSD – Mosquito Production



PROTECTING
PUBLIC HEALTH
SINCE 1915

LGVSD – Mosquito Production



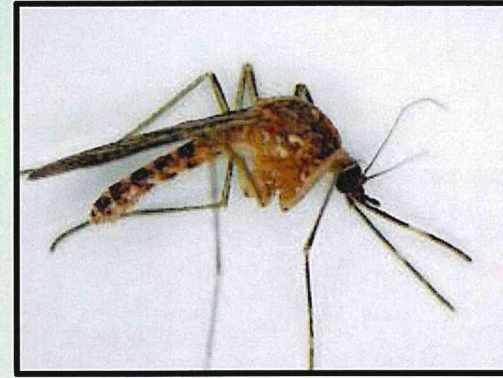
PROTECTING
PUBLIC HEALTH
SINCE 1915

LGVS Mosquito Production



Copyright © 2017 Joyce Gross

Culex tarsalis – western encephalitis mosquito



Culex erythrothorax – CA. tule mosquito



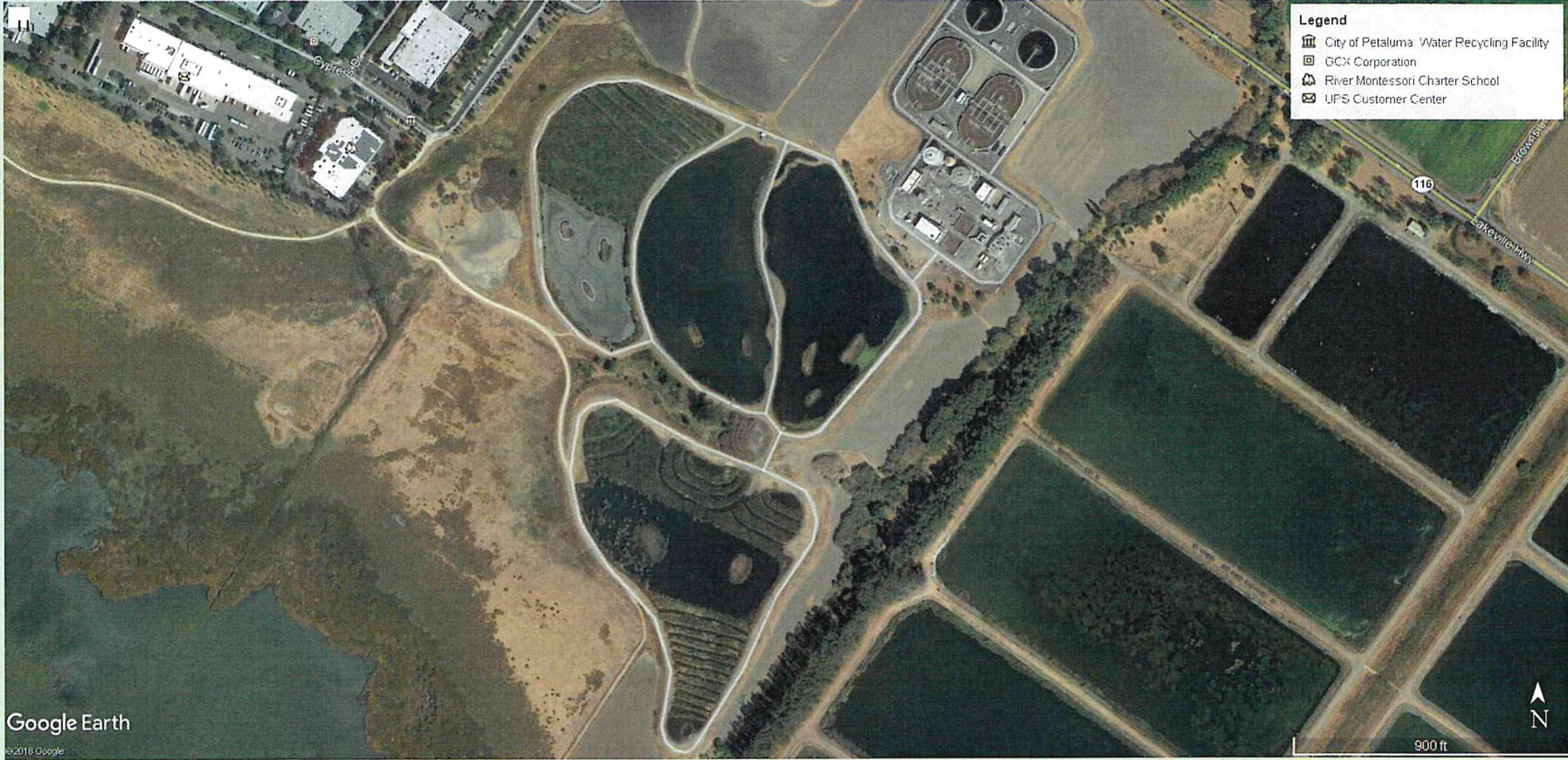
PROTECTING
PUBLIC HEALTH
SINCE 1915

Ellis Creek Water Recycling Facility Petaluma



PROTECTING
PUBLIC HEALTH
SINCE 1915

Ellis Creek Water Recycling Facility Petaluma



PROTECTING
PUBLIC HEALTH
SINCE 1915

Thank you!

Questions?

Request Service:
707-285-2200 or online

www.ms mosquito.com



PROTECTING
PUBLIC HEALTH
SINCE 1915