



101 Lucas Valley Road, Suite 300
San Rafael, CA 94903
Tel.: 415-472-1734
Fax: 415-499-7715
www.LGVSD.org

MANAGEMENT TEAM
General Manager, Curtis Paxton
Plant Operations, Mel Liebmann
Collections/Safety/Maintenance, Greg Pease
Engineering, Michael P. Cortez
Administrative Services, Dale McDonald

DISTRICT BOARD
Megan Clark
Nicholas Lavrov
Craig K. Murray
Gary E. Robards
Crystal J. Yezman

ADDENDUM NO. 1

Date: February 21, 2025
Project: **Solar Photovoltaic System Replacement Rebid**
Job No.: 22500-04

To: All Planholders and Prospective Bidders

The following changes and/or clarifications are hereby made to the Request for Proposals and shall become a part of the RFP dated February 5, 2025.

1. Proposal Deadline – The proposal deadline has been extended to **March 7, 2025, 11:00 am**. The milestones shown in the project schedule will be adjusted accordingly.
2. Contractor License Requirements – The RFP requires a Class A General Engineering California contractor’s license. By this addendum, a contractor with a Class B (General Building Contractor) with a C-10 (Electrical Contractor) California State License is also allowed to participate in this RFP.
3. Revised Bid Schedule:
 - a) Use the attached revised Bid Schedule for the proposal.
 - b) The Bid Schedule has been revised for the following:
 - i. **Base Bid** – Construction of a new solar panel ground mount racking system.
 - ii. **Alternate Bid** – Repurposing the metal framework and concrete foundation of the existing solar panel ground mount racking system.
 - c) Proposers are required to provide the price for both the base bid and alternative base bid.
 - d) The District will conduct a detailed structural analysis of the solar panel ground mount racking system at an appropriate time before the award of a contract.
 - e) Detailed instructions on the acceptance or rejection of the bid alternate are shown in the revised bid schedule.

Questions Received from Proposers:

The following questions were submitted before the date of this addendum. LGVSD responses to the questions are in bold.

- Q1. Confirm if weed mitigation should be included in the bid.
Response:
- a) **The contractor is required to mow the site prior to the start of construction.**
 - b) **The contractor is required to implement an annual vegetation control plan using mechanical control (mowing) as weed control under and around the solar panels for a period of five years.**
 - c) **Herbicide applications are not acceptable.**
 - d) **As a reminder, Proposers shall schedule a site visit with the District and submit a notarized copy of the Site Visit Affidavit with their proposal.**
- Q2. Is it possible to receive a copy of the NEM2 summary to ensure we stay below the CEC and DC KW size applied for.

Response: See attached NEM application and Single Line Diagram.

Q3. Confirm there are no biohazard concerns such as naturally occurring asbestos.

Response: For bidding purposes, assume that the site is free of naturally occurring asbestos. The District will conduct a soil analysis at an appropriate time after the award of a contract and will address the issue accordingly through a change order if mitigation is necessary.

Q4. NOTICE INVITING PROPOSALS, no. 6, requires Class A contractor's license. Will a B and C-10 be more appropriate for the work?

Response: See Item 2 above.

Q5. Part 1 Objective 1.1 D

a. How does engineering liability get split off in this situation?

Response: For the Base Bid requiring the construction of a new solar panel ground mount racking system, the contractor shall be responsible for the design of the system by a California Registered Professional Civil Engineer. For the alternate base bid, the District assumes full responsibility of repurposing the existing solar panel ground mount racking system after the submittal of pertinent design parameters (weight, dimensions, etc.) by the contractor.

b. Does the district anticipate reuse of the horizontal pipes of the frame?

Response: The District is assuming that the weight of the new solar panels currently available (2.2 pounds per square foot) are lighter than the existing panels (2.6 pounds per square foot) to be replaced. The District is also assuming that the new subarray will not exceed the overall physical footprint of the existing subarray. As such, reusing structural members such as the vertical columns, diagonal braces, and horizontal beams are acceptable for cost estimating purposes for the alternate bid item.

c. May the EPC utilize the aluminum top rails for reconstructing the new arrays?

Response: The District is assuming that the dimensions of the new individual solar panels currently available are larger in size than the existing panels to be replaced. It is the responsibility of the proposer to determine if the new solar panels would require modifications of the aluminum top rails based on the dimensions and noting the weight difference described in Item b above.

Q6. Part 3 Scope of Work 3.1 General E - Outside of San Rafael and the County of Marin fire access to the disconnect, what are the road requirements within the fence line, if any?

Response:

a. **Proposers shall include in the base and alternate bid prices an allowance for:**

- i. **Construction of a fire access road consisting of 4-in thick gravel road base from the pond levee to the existing equipment building including clearing and grubbing, re-compaction, and re-grading as necessary. Assume the total length of approximately 700 ft by 20 ft wide.**
- ii. **Construction of a fire truck hammerhead turnaround consisting of 4-in thick gravel road base with appropriate radiuses per latest edition of the California Fire Code near the location of the existing equipment building including clearing and grubbing, re-compaction, and re-grading as necessary.**
- iii. **Tree trimming along the existing perimeter maintenance road.**

- iv. **Re-grading the overall site for proper drainage and installation of drainage culvert as necessary into the existing low point on the southeast corner of the site.**

b. See Item Q1 for the Site Visit Affidavit requirements.

Q7. Part 3 Scope of Work 3.1 A and Part 4 Specifications 4.5.C 2. - Who is responsible for trucking solar panels to the recycler?

Response: The District will hire a third-party contractor for the trucking of the solar panels to an offsite recycling facility. However, the contractor shall palletize the solar panels and deliver to a maintenance building located approximately 1,000 feet from the project site.

Q8. Part 4 Specifications 4.1.B.2. – How will the vendor design portions of the mounting structures split off in terms of structural integrity analysis? Are there any structural calculations for the existing footing and racking system?

Response: See responses to Q5 above regarding contractor and District responsibilities for the base bid and alternate bid, respectively. The District does not have structural calculations for the existing racking system currently available on file.

Q9. Part 4 Specifications 4.4 Material Specifications

- a. A.4: Does the structural design begin at the top of vertical pipes?

Response: See response to Q5 above.

- b. A.18 and F.1: Will the district allow for schedule 80 PVC for DC string masts at the array? As a value engineered approach, schedule 80 PVC above ground is allowed by the NEC, and will be protected from above.

Response: Yes, subject to review and approval of materials submittals after the award of contract.

- c. G.1: will you accept aluminum conductors for large 1500-volt DC feeder circuits, with crimp style terminations as a viable substitute for copper? Aluminum terminated with double crimp style connectors eliminates the risk of loose connections. The cost of these long copper runs is significant.

Response: Yes, subject to review and approval of materials submittals after the award of contract.

Q10. Will the existing permanent fence around the array be acceptable as it is?

Response: Yes.

Q11. Are the 3 rows of BP panels at the southernmost section of the site included in the rebid?

Response: Yes. In addition, the contractor shall palletize the solar panels and deliver to a maintenance building located approximately 1,000 feet from the project site.

Q12. Will special inspections, 3rd Party Inspections and any potential laboratory costs be borne by the district?

Response: The District is responsible for third-party inspections and potential lab analysis costs.

Q13. Part 2.1 d: This section directs the Awardee to assume control of the Interconnection Application. Is the IA information available to review?

Response: See attached.

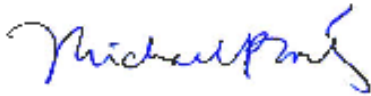
Q14. Bid Schedule, 5 Year Maintenance Bond: Is the intent of the Bid Schedule and 5 Year Maintenance Bond for the Awardee to provide full Operation, Monitoring and Maintenance of the PV Plant? We couldn't locate provisions of such O&M requirements.

Response: Yes. The revised Bid Schedule provides bid items for 5-Year Operation and Maintenance and 5-Year Monitoring with Solar Panel Anti-Theft System.

This addendum consists of thirty-three (33) pages including this page and attachments. Acknowledge receipt of this addendum by signing in the space provided below. Submit an original copy of this addendum cover page along with the proposal.

Las Gallinas Valley Sanitary District:

Proposer: _____



Michael P. Cortez, PE, District Engineer

(Authorized Signature)

(Date)

BID SCHEDULE (Revised per Addendum 1 dated 2/21/2025)

1. Mobilization, Demobilization, and General Conditions: Lump sum price for preparatory work and operations and establishment of other facilities necessary to work on the Project, including but not limited to labor compliance, prevailing wage compliance, all General Conditions requirements, demobilization, cleanup, and surface restoration to the satisfaction of the District at the completion of the Project.

Lump Sum Price: \$ _____ (In figures)

2. For the design and construction of **SOLAR PHOTOVOLTAIC SYSTEM REPLACEMENT REBID** consisting of 1 MW solar PV system in accordance with the Contract Documents.

Item No.	Description	Make and Model	QTY	Unit Price	Extended Price
a	Solar PV Panels				
b	Inverters				
c	Balance of Materials				
d	New racking system consisting of metal framework and solar panel rail mounting system.				
e	Foundation (specify type, i.e. concrete ballast, pile, etc.)				
f	Demolition				
g	Miscellaneous Labor				
h	5-Year Operation and Maintenance				
i	5-Year Monitoring with Solar Panel Anti-Theft System	LiteWIRE or equal			
j	5-Year Vegetation Control by Mowing				

k	Other:				
l	Other:				
m	Tax				

Extended Total (Sum of Extended Prices, Items 2a through 2m): \$ _____

TOTAL BASE BID (Sum of Items 1 and 2):

(in figures): \$ _____

(in words): _____

BID ALTERNATES: The undersigned Bidder offers to make, at the following Bid Alternate prices, the change in the Work covered by the Total Base Bid that is specified in the Bid Alternate priced below. It is understood that:

1. A price must be filled in for each Bid Alternate item.
2. The acceptance or rejection of the Bid Alternate is at the option of the District.
3. Acceptance or rejection of the Bid Alternate will not necessarily be made on the basis of price alone.
4. The acceptance or rejection of the Bid Alternate will not affect the Total Base Bid or other conditions of the Base Bid items listed above except as specifically noted in the Alternate Bid Schedule.
5. The original Total Base Bid, without deduction or addition shown herein, shall be the basis of award.
6. The costs shown herein for Bid Alternate Items is the net adjustment that is to be applied to the Total Base Bid when calculating the Contract Price if the Bid Alternate is accepted by the District.
7. The final Contract Price shall be the net amount determined by applying the Total Base Bid and any adjustment made by the District regarding the approved and awarded Bid Alternate items.
8. The listed costs shall include changes to mobilization, taxes, permits, overhead and profit, as it relates to each individual alternate item.

Alternate Bid Item:

The deductive cost for repurposing the steel framework (horizontal beams, vertical columns, and diagonal braces) and concrete grade beam foundation of the existing solar panel ground mount racking system, and:

- a. Utilizing solar panels that are lighter in weight than the existing solar panels that are 2.6 pounds per square foot.
- b. Utilizing solar panels that are larger in size, however, when combined as an array, will not exceed the overall physical footprint of the existing solar panel array.
- c. The contractor shall have the option to reuse the aluminum top rails to secure the solar panels into the steel framework after evaluating their structural integrity and dimensional compatibility.

Total Deductive Cost: \$ _____ (In figures)

**PROPOSAL SHEET
OMISSIONS AND EXCEPTIONS**

List all items that have been omitted from the proposal and any exceptions to the Contract Documents.

Item No.	Description	Comments
1		
2		
3		
4		
5		
6		
7		
8		
9		
10		
11		
12		
13		
14		
15		

INSTALLATION SCHEDULE

Item		Starting Week #	Ending Week #
1	Contract	Week 0	Week 0
2	Design		
3	Permitting		
4	Demolition		
5	Racking Modifications		
6	Materials Delivery		
7	Materials Installation		
8	Commissioning		
9	Permission to Operate		
10	Staff Training		
	Total Number of Weeks*		

***Notes:**

1. The District intends to meet the deadline to install and connect the solar PV system to the grid no later than April 14, 2026 in order to retain CPUC NEM 2.0 status.
2. Contractor shall obtain the PG&E Permit to Operate (PTO) 60 days prior to the CPUC NEM 2.0 deadline.



Pacific Gas and
Electric Company®

INTERCONNECTION AGREEMENT FOR NET ENERGY METERING 2 (NEM2) OF A RENEWABLE ELECTRIC GENERATING FACILITY OF 1,000 KW OR LESS, EXCEPT NEM2 SOLAR OR WIND FACILITIES OF 30 KW OR LESS, AND VIRTUAL NET ENERGY METERING (NEM2V) OF A RENEWABLE ELECTRIC GENERATING FACILITY OF 1,000 KW OR LESS

This INTERCONNECTION AGREEMENT FOR NET ENERGY METERING 2 (NEM) OF A RENEWABLE ELECTRIC GENERATING FACILITY OF 1,000 KW OR LESS, EXCEPT NEM2 SOLAR OR WIND FACILITIES OF 30 KW OR LESS, AND VIRTUAL NET ENERGY METERING (NEM2V) OF A RENEWABLE ELECTRIC GENERATING FACILITY OF 1,000 KW OR LESS (Agreement)¹ is entered into by and between LAS GALLINAS VALLEY SANITARY DISTRICT (Customer-Generator), and Pacific Gas and Electric Company (PG&E), a California Corporation. Customer-Generator and PG&E are sometimes also referred to in this Agreement jointly as “Parties” or individually as “Party.” In consideration of the mutual promises and obligations stated in this Agreement and its attachments, the Parties agree as follows:

1. SCOPE AND PURPOSE

1.1 This Agreement provides for Customer-Generator to interconnect and operate a Renewable Electrical Generation Facility as defined in Schedule NEM2 (if this is a NEM2 Solar or Wind Generating Facility less than 30 kW, please use form 79-1151A-02) (Generating Facility) in parallel with PG&E’s Electric System to serve the electrical loads connected to the electric service account that PG&E uses to interconnect Customer-Generator’s Generating Facility. Customer-Generator’s Generating Facility is intended primarily to offset part or all of the Customer-Generator’s own electrical requirements. Consistent with, and in order to effectuate, the provisions of Sections 2827 of the California Public Utilities Code and PG&E’s electric rate Schedule NEM2 (NEM2), Parties enter into this Agreement. This Agreement applies to the Customer-Generator’s Generating Facilities identified below with the specified characteristics and generating capacity, and does not allow interconnection or operation of facilities different than those described.

2. SUMMARY AND DESCRIPTION OF CUSTOMER-GENERATOR’S GENERATING FACILITY AND DESIGNATION OF OTHERWISE-APPLICABLE RATE SCHEDULE

2.1 A description of the Generating Facility, including a summary of its significant components, and a single-line diagram showing the general arrangement of how Customer-Generator’s Generating Facility and loads are interconnected with PG&E’s Electric System, is attached to and made a part of this Agreement. (This description is supplied by Customer-Generator as Appendix A).

2.2 Generating Facility identification number: 30S790163 (Assigned by PG&E).

¹ Additional forms are available on PG&E’s website at <http://www.pge.com/gen>).



**INTERCONNECTION AGREEMENT FOR
NET ENERGY METERING 2 (NEM2)
OF A RENEWABLE ELECTRIC GENERATING FACILITY
OF 1,000 KW OR LESS, EXCEPT NEM2 SOLAR OR WIND
FACILITIES OF 30 KW OR LESS, AND VIRTUAL NET
ENERGY METERING (NEM2V) OF A RENEWABLE
ELECTRIC GENERATING FACILITY OF 1,000 KW OR
LESS**

2.3 Customer-Generator's electric service agreement ID number: 0588435462
(Assigned by PG&E).

2.4 Name and address used by PG&E to locate the electric service account used to interconnect the Generating Facility with PG&E's Electric System:

Name: LAS GALLINAS VALLEY SANITARY DISTRICT

Address: 300 SMITH RANCH RD ELECTRIC BLDG

City/Zip Code: SAN RAFAEL, CA, 94903

2.5 The Gross Nameplate Rating of the Generating Facility: 872.326 kW.

2.6 The Net Nameplate Rating of the Generating Facility: 990.454 kW.

2.7 The expected annual energy production of the Generating Facility is 1,852,000 kWh.

2.8 Customer-Generator's otherwise-applicable rate schedule as of the execution of this Agreement is B10S.

2.9 The Generating Facility's expected date of Initial Operation is 9/27/2024.
The expected date of Initial Operation shall be within two years of the date of this Agreement.

2.10 Smart Inverters - For Customer-Generator applications received on or after September 9, 2017, the Customer-Generator certifies that their inverter-based Generating Facilities fully comply with Section Hh of Rule 21, including configuration of protective settings and default settings, in accordance with the specifications therein.

Distribution Provider may require a field verification of the Customer-Generator's inverter. Customer-Generator further agrees to cooperate fully with any such request and make their inverter available to the Distribution Provider for such verification. Customer-Generator understands that in the event the inverter is not set in accordance with Section Hh of Rule 21, Customer-Generator will need to cease operation of generating facility until verification is confirmed by Distribution Provider.

(Solar inverter models and firmware versions that comply with Rule 21 Section Hh can be found at <https://www.energy.ca.gov/programs-and-topics/topics/renewable-energy/solar-equipment-lists>.)

Verification of compliance with such requirements shall be provided by the Customer-Generator upon request by PG&E in accordance with PG&E's Electric Rule 21.

An "existing inverter" is defined as an inverter that is a component of an existing Generating Facility that meets one or more of the following conditions:

- (a) it is already approved by PG&E for interconnection prior to September 9, 2017
- (b) the Customer-Generator has submitted the interconnection application prior to September 9, 2017,
- (c) the Customer-Generator provides evidence of having applied for an electrical permit for the Generating Facility installation that is dated prior to September 9,



**INTERCONNECTION AGREEMENT FOR
NET ENERGY METERING 2 (NEM2)
OF A RENEWABLE ELECTRIC GENERATING FACILITY
OF 1,000 KW OR LESS, EXCEPT NEM2 SOLAR OR WIND
FACILITIES OF 30 KW OR LESS, AND VIRTUAL NET
ENERGY METERING (NEM2V) OF A RENEWABLE
ELECTRIC GENERATING FACILITY OF 1,000 KW OR
LESS**

2017 and submitted a complete interconnection application² no later than March 31, 2018, or

(d) the Customer-Generator provides evidence of a final inspection clearance from the governmental authority having jurisdiction over the Generating Facility prior to September 9, 2017.

All “existing inverters” are not required to be Smart Inverters and are only subject to Section H of Rule 21. Customer-Generator replacing an “existing inverter” certifies it is being replaced with either:

- (i) inverter equipment that complies with Section Hh of Rule 21, (encouraged); or
- (ii) a conventional inverter that is of the same size and equivalent ability to that of the inverter being replaced, as allowed in Rule 21 Section H.3.d.ii.

3. DOCUMENTS INCLUDED AND DEFINED TERMS

3.1 This Agreement includes the following exhibits that are specifically incorporated herein and made a part of this Agreement.

- | | |
|------------|---|
| Appendix A | Description of Generating Facility and Single-Line Diagram (Supplied by Customer-Generator). |
| Appendix B | A Copy of <i>PG&E's Agreement for Installation or Allocation of Special Facilities</i> (Forms 79-255, 79-280, 79-702) or <i>Agreements to Perform Any Tariff Related Work</i> (62-4527), if applicable (Formed by the Parties). |
| Appendix C | Schedule NEM2 / NEM2V Customer-Generator Warranty That it Meets the Requirements for an Eligible Customer-Generator and Is an Eligible Renewable Electrical Generation Facility Pursuant to Section 2827 of the California Public Utilities Code (if applicable). |
| Appendix D | NEM2 Load Aggregation Customer-Generator Declaration Warranting NEM2 Aggregation Is Located On Same or Adjacent or Contiguous Property to Generator Parcel (if applicable) |
| Appendix E | Customer-Generator Affidavit Warranting That NEM2V Arrangement Is Sized to Load (if applicable) |
| Appendix F | NEMV, NEM2V, NEMVMASH or NEM2VMSH Storage (if applicable) |

² A complete application consists all of the following without deficiencies:

1. A completed Interconnection Application including all supporting documents and required payments, (continued next page)
2. A completed signed Interconnection Agreement,
3. Evidence of the Customer-Generator final inspection clearance from the governmental authority having jurisdiction over the generating system.



**INTERCONNECTION AGREEMENT FOR
NET ENERGY METERING 2 (NEM2)
OF A RENEWABLE ELECTRIC GENERATING FACILITY
OF 1,000 KW OR LESS, EXCEPT NEM2 SOLAR OR WIND
FACILITIES OF 30 KW OR LESS, AND VIRTUAL NET
ENERGY METERING (NEM2V) OF A RENEWABLE
ELECTRIC GENERATING FACILITY OF 1,000 KW OR
LESS**

Appendix G Operating Requirements for Energy Storage Device(s) (when applicable)

In addition, PG&E Electric Tariff Rules and Rates, including but not limited to Electric Rules 2, 14, 15, 16, and 21, Schedule NEM2 (if applicable), Schedule NEM2V (if applicable) and Customer-Generator's otherwise-applicable rate schedule, available at PG&E's website at www.pge.com or by request, are specifically incorporated herein and made part of this Agreement.

- 3.2 When initially capitalized, whether in the singular or in the plural, the terms used herein shall have the meanings assigned to them either in this Agreement or in PG&E's Electric Rule 21, Section C.

4. TERM AND TERMINATION

- 4.1 This Agreement shall become effective as of the last date entered in Section 20 below. The Agreement shall continue in full force and effect until the earliest date that one of the following events occurs:
- (a) The Parties agree in writing to terminate the Agreement.
 - (b) Unless otherwise agreed in writing by the Parties, at 12:01 A.M. on the day following the date the electric service account through which Customer-Generator's Generating Facility is interconnected to PG&E is closed or terminated.
 - (c) At 12:01 A.M. on the 61st day after Customer-Generator or PG&E provides written Notice pursuant to Section 10 below to the other Party of Customer-Generator's or PG&E's intent to terminate this Agreement.
- 4.2 Customer-Generator may elect to terminate this Agreement pursuant to the terms of Section 4.1(c) for any reason. PG&E may elect to terminate this Agreement pursuant to the terms of Section 4.1(c) for one or more of the following reasons:
- (a) A change in applicable rules, tariffs, or regulations, as approved or directed by the Commission, or a change in any local, state or federal law, statute or regulation, either of which materially alters or otherwise affects PG&E's ability or obligation to perform PG&E's duties under this Agreement; or,
 - (b) Customer-Generator fails to take all corrective actions specified in PG&E's Notice that Customer-Generator's Generating Facility is out of compliance with the terms of this Agreement within the time frame set forth in such Notice; or,
 - (c) Customer-Generator abandons the Generating Facility. PG&E shall deem the Generating Facility to be abandoned if PG&E determines, in its sole opinion, the Generating Facility is nonoperational and Customer-Generator does not provide a substantive response to PG&E Notice of its intent to terminate this Agreement as a result of Customer-Generator's apparent abandonment of the Generating Facility affirming Customer-Generator's intent and ability to continue to operate the Generating Facility; or,
 - (d) Customer-Generator's Generating Facility ceases to meet all applicable safety and performance standards set out in Section 5.



**INTERCONNECTION AGREEMENT FOR
NET ENERGY METERING 2 (NEM2)
OF A RENEWABLE ELECTRIC GENERATING FACILITY
OF 1,000 KW OR LESS, EXCEPT NEM2 SOLAR OR WIND
FACILITIES OF 30 KW OR LESS, AND VIRTUAL NET
ENERGY METERING (NEM2V) OF A RENEWABLE
ELECTRIC GENERATING FACILITY OF 1,000 KW OR
LESS**

- 4.3 Notwithstanding any other provisions of this Agreement, PG&E shall have the right to unilaterally file with the Commission, pursuant to the Commission's rules and regulations, an application to terminate this Agreement.
- 4.4 Any agreements attached to and incorporated into this Agreement shall terminate concurrently with this Agreement unless the Parties have agreed otherwise in writing.

5. GENERATING FACILITY REQUIREMENTS

- 5.1 Customer-Generator's Generating Facility must meet all applicable safety and performance standards established by the National Electrical Code, the Institute of Electrical and Electronics Engineers, and accredited testing laboratories such as Underwriters Laboratories and, where applicable, rules of the Commission regarding safety and reliability including Rule 21.
- 5.2 Customer-Generator shall: (a) maintain the Generating Facility and Interconnection Facilities in a safe and prudent manner and in conformance with all applicable laws and regulations including, but not limited to, Section 5.1, and (b) obtain any governmental authorizations and permits required for the construction and operation of the Generating Facility and Interconnection Facilities. Customer-Generator shall reimburse PG&E for any and all losses, damages, claims, penalties, or liability it incurs as a result of Customer-Generator's failure to obtain or maintain any governmental authorizations and permits required for construction and operation of Customer-Generator's Generating Facility.
- 5.3 Customer-Generator shall not commence parallel operation of the Generating Facility until PG&E has provided express written approval. Such approval shall normally be provided no later than thirty (30) business days following PG&E's receipt of: (1) a completed *Rule 21 Generator Interconnection Application* (Form 79-1174-02), including all supporting documents and payments as described in the Application; (2) a signed and completed *INTERCONNECTION AGREEMENT FOR A NET ENERGY METERING (NEM2/NEM2V) OF A RENEWABLE ELECTRICAL GENERATION FACILITY OF 1,000 KW OR LESS, EXCEPT SOLAR OR WIND* (Form 79-XXXX-02); and (3) a copy of the Customer-Generator's final inspection clearance from the governmental authority having jurisdiction over the Generating Facility. Such approval shall not be unreasonably withheld. PG&E shall have the right to have representatives present at the Commissioning Test as defined in Rule 21. Customer-Generator shall notify PG&E at least five (5) business days prior to the initial testing.
- 5.4 In order to promote the safety and reliability of the customer Generating Facility, the applicant certifies that as a part of each interconnection request for NEM2, that all major solar system components are on the verified equipment list maintained by the California Energy Commission and certifies that other equipment, as determined by PG&E, has safety certification from a nationally recognized testing laboratory.
- 5.5 Applicant certifies as a part of each interconnection request for NEM2 that
- (i) a warranty of at least 10 years has been provided on all equipment and on its installation, or
 - (ii) a 10-year service warranty or executed "agreement" has been provided ensuring proper maintenance and continued system performance.



**INTERCONNECTION AGREEMENT FOR
NET ENERGY METERING 2 (NEM2)
OF A RENEWABLE ELECTRIC GENERATING FACILITY
OF 1,000 KW OR LESS, EXCEPT NEM2 SOLAR OR WIND
FACILITIES OF 30 KW OR LESS, AND VIRTUAL NET
ENERGY METERING (NEM2V) OF A RENEWABLE
ELECTRIC GENERATING FACILITY OF 1,000 KW OR
LESS**

- 5.6 Customers on this tariff must pay for the interconnection of their Generation Facilities as provided in Electric Rule 21, pursuant to Decision 16-01-044.

6. INTERCONNECTION FACILITIES

- 6.1 Customer-Generator and/or PG&E, as appropriate, shall provide Interconnection Facilities that adequately protect PG&E's Electric System, personnel, and other persons from damage or injury, which may be caused by the operation of Customer-Generator's Generating Facility.
- 6.2 Customer-Generator shall be solely responsible for the costs, design, purchase, construction, permitting, operation, and maintenance of the Interconnection Facilities that Customer-Generator owns.
- 6.3 If the provisions of PG&E's Electric Rule 21, or any other tariff or rule approved by the Commission, require PG&E to own and operate a portion of the Interconnection Facilities, Customer-Generator and PG&E shall promptly execute a Special Facilities Agreement that establishes and allocates responsibility for the design, installation, operation, maintenance, and ownership of the Interconnection Facilities. This Special Facilities Agreement shall be attached to and made a part of this Agreement as Appendix B.

7. LIMITATION OF LIABILITY

Each Party's liability to the other Party for any loss, cost, claim, injury, liability, or expense, including reasonable attorney's fees, relating to or arising from any act or omission in its performance of this agreement, shall be limited to the amount of direct damage actually incurred. In no event shall either Party be liable to the other Party for any indirect, special, consequential, or punitive damages of any kind whatsoever.

8. INSURANCE

- 8.1. Customer-Generator Facility is required to comply with standards and rules set forth in Section 5 and provide the following for insurance policies in place.

- (a) For NEM2V Customer-Generators only, to the extent that Customer-Generator has currently in force property insurance and commercial general liability or personal liability insurance, Customer-Generator agrees that it will maintain such insurance in force for the duration of this Agreement in no less amounts than those currently in effect. Pacific Gas and Electric Company shall have the right to inspect or obtain a copy of the original policy or policies of insurance prior to commencing operation. As long as Customer-Generator meets the requirements of this Section 8.1(a), Customer-Generator shall not be required to purchase any additional liability insurance.

I have insurance. I hereby certify that there is presently insurance coverage in the amount of \$ 2MIL for the Schedule NEM2V Generating Facility location.



INTERCONNECTION AGREEMENT FOR NET ENERGY METERING 2 (NEM2) OF A RENEWABLE ELECTRIC GENERATING FACILITY OF 1,000 KW OR LESS, EXCEPT NEM2 SOLAR OR WIND FACILITIES OF 30 KW OR LESS, AND VIRTUAL NET ENERGY METERING (NEM2V) OF A RENEWABLE ELECTRIC GENERATING FACILITY OF 1,000 KW OR LESS

Insuring Company's Name: N/A

Insurance Policy #

I do not have insurance. I hereby certify that there is presently \$0 (zero) dollars of insurance for the Schedule NEM2V Generating Facility location.

- 8.2. Customer-Generator shall furnish the required certificates and all endorsements to PG&E prior to Parallel Operation.
8.3. The certificate shall provide thirty (30) calendar days' written notice to PG&E prior to cancellation, termination, alteration, or material change of such insurance.
8.4. PG&E shall have the right to inspect or obtain a copy of the original policy or policies of insurance.

If at any time during this agreement the Customer-Generator fails to meet the requirements in Section 5, the following insurance shall apply:

Customer-Generator shall procure and maintain a commercial general liability insurance policy at least as broad as the Insurance Services Office (ISO) commercial general liability coverage "occurrence" form; or, if Customer-Generator is an individual, then liability coverage with respect to premises and use at least as broad as the ISO homeowners' or personal liability Insurance occurrence policy form, or substitute, providing equivalent coverage no less than the following limits, based on generator size:

- (a) Two million dollars (\$2,000,000) for each occurrence if the Gross Nameplate Rating of the Generating Facility is greater than one hundred (100) kW; or
(b) One million dollars (\$1,000,000) for each occurrence if the Gross Nameplate Rating of the Generating Facility is greater than twenty (20) kW and less than or equal to one hundred (100) kW; or
(c) Five hundred thousand dollars (\$500,000) for each occurrence if the Gross Nameplate Rating of the Generating Facility is twenty (20) kW or less;
(d) Two hundred thousand dollars (\$200,000) for each occurrence if the Gross Nameplate Rating of the Generating Facility is ten (10) kW or less and the Generating Facility is connected to an account receiving residential service from PG&E.

The insurance shall, by endorsement:

- (a) Add PG&E as an additional insured;
(b) State that coverage provided is primary and is not in excess to or contributing with any insurance or self-insurance maintained by PG&E.
(c) Contain a severability of interest clause or cross-liability clause



**INTERCONNECTION AGREEMENT FOR
NET ENERGY METERING 2 (NEM2)
OF A RENEWABLE ELECTRIC GENERATING FACILITY
OF 1,000 KW OR LESS, EXCEPT NEM2 SOLAR OR WIND
FACILITIES OF 30 KW OR LESS, AND VIRTUAL NET
ENERGY METERING (NEM2V) OF A RENEWABLE
ELECTRIC GENERATING FACILITY OF 1,000 KW OR
LESS**

8.5. If Customer-Generator's Generating Facility is connected to an account receiving residential service from PG&E and the requirement of Section 8.1 prevents Customer-Generator from obtaining the insurance required in this Section, then upon Customer-Generator's written Notice to PG&E in accordance with Section 10.1, the requirements of Section 8.1 may be waived.

8.6. Customer-Generator may self-insure with approval from PG&E. Evidence of an acceptable plan to self-insure, at least thirty (30) calendar days' prior to operations shall be submitted. Customer-Generators such as state agencies that self-insure under this section are exempt from Section 8.1.

If Customer-Generator ceases to self-insure to the level required hereunder, or if Customer-Generator is unable to provide continuing evidence of Customer-Generator's ability to self-insure, Customer-Generator agrees to immediately obtain the coverage required under agreement.

8.7. All required certificates, endorsements or letters of self-insurance shall be issued and submitted via email or fax to the following:

Pacific Gas and Electric Company
Attn: Insurance Department
77 Beale St.
San Francisco, CA 94105

9. INDEMNITY FOR FAILURE TO COMPLY WITH INSURANCE PROVISIONS

9.1 If Customer-Generator fails to comply with the insurance provisions of this Agreement, Customer-Generator shall, at its own cost, defend, save harmless and indemnify PG&E, its directors, officers, employees, agents, assignees, and successors in interest from and against any and all loss, liability, damage, claim, cost, charge, demand, or expense of any kind or nature (including attorney's fees and other costs of litigation) resulting from the death or injury to any person or damage to any property, including the personnel and property of the utility, to the extent that the utility would have been protected had Customer-Generator complied with all such insurance provisions. The inclusion of this Section 19.1 is not intended to create any expressed or implied right in Customer-Generator to elect not to provide any such required insurance.

9.2 The provisions of this Section 9 shall not be construed to relieve any insurer of its obligations to pay any insurance claims in accordance with the provisions of any valid insurance policy..



**INTERCONNECTION AGREEMENT FOR
NET ENERGY METERING 2 (NEM2)
OF A RENEWABLE ELECTRIC GENERATING FACILITY
OF 1,000 KW OR LESS, EXCEPT NEM2 SOLAR OR WIND
FACILITIES OF 30 KW OR LESS, AND VIRTUAL NET
ENERGY METERING (NEM2V) OF A RENEWABLE
ELECTRIC GENERATING FACILITY OF 1,000 KW OR
LESS**

13. NON-WAIVER

None of the provisions of this Agreement shall be considered waived by a Party unless such waiver is given in writing. The failure of a Party to insist in any one or more instances upon strict performance of any of the provisions of this Agreement or to take advantage of any of its rights hereunder shall not be construed as a waiver of any such provisions or the relinquishment of any such rights for the future, but the same shall continue and remain in full force and effect.

14. DISPUTES

14.1 Dispute Resolution

Any dispute arising between the Parties regarding a Party's performance of its obligations under this Agreement or requirements related to the interconnection of the Generating Facility shall be resolved according to the procedures in Rule 21.

15. REVIEW OF RECORDS AND DATA

15.1 Applicable Tax Laws and Regulation

The Parties agree to follow all applicable tax laws and regulations, consistent with CPUC policy and Internal Revenue Service requirements.

15.2 Maintenance of Tax Status

Each Party shall cooperate with the other to maintain the other Party's tax status. Nothing in this Agreement is intended to adversely affect the Distribution Provider's tax exempt status with respect to the issuance of bonds including, but not limited to, local furnishing bonds

16. GOVERNING LAW, JURISDICTION OF COMMISSION, INCLUSION OF PG&E's TARIFF SCHEDULES AND RULES

16.1 This Agreement shall be interpreted, governed, and construed under the laws of the State of California as if executed and to be performed wholly within the State of California without giving effect to choice of law provisions that might apply to the law of a different jurisdiction.

16.2 This Agreement shall, at all times, be subject to such changes or modifications by the Commission as it may from time to time direct in the exercise of its jurisdiction.

16.3 The interconnection and services provided under this Agreement shall at all times be subject to the terms and conditions set forth in the Tariff Schedules and Rules applicable to the electric service provided by PG&E, which Tariff Schedules and Rules are hereby incorporated into this Agreement by this reference.

16.4 Notwithstanding any other provisions of this Agreement, PG&E shall have the right to unilaterally file with the Commission, pursuant to the Commission's rules and regulations, an application for change in rates, charges, classification, service, tariff or rule or any agreement relating thereto.

**INTERCONNECTION AGREEMENT FOR
NET ENERGY METERING 2 (NEM2)
OF A RENEWABLE ELECTRIC GENERATING FACILITY
OF 1,000 KW OR LESS, EXCEPT NEM2 SOLAR OR WIND
FACILITIES OF 30 KW OR LESS, AND VIRTUAL NET
ENERGY METERING (NEM2V) OF A RENEWABLE
ELECTRIC GENERATING FACILITY OF 1,000 KW OR
LESS**



17. CRD POWER CONTROL SYSTEM CERTIFICATION

When applicable, Customer-Generator confirms that the Renewable Electrical Generation Facility including Energy Storage over 10 kW that has received UL 1741 CRD for Power Control Systems (PCS) certification will comply with either No Grid Charge or No Storage Export as defined in Schedule NEM2.

18. AMENDMENT AND MODIFICATION

This Agreement can only be amended or modified in writing, signed by both Parties.

19. ENTIRE AGREEMENT

This Agreement, including any incorporated Tariff Schedules and Rules, contains the entire Agreement and understanding between the Parties, their agents, and employees as to the subject matter of this Agreement. Each party also represents that in entering into this Agreement, it has not relied on any promise, inducement, representation, warranty, agreement or other statement not set forth in this Agreement or in the incorporated Tariff Schedules and Rules.

20. SIGNATURES

IN WITNESS WHEREOF, the Parties hereto have caused this Agreement to be executed by their duly authorized representatives. This Agreement is effective as of the last date set forth below.

LAS GALLINAS VALLEY SANITARY DISTRICT

PACIFIC GAS AND ELECTRIC COMPANY

(Customer-Generator's Name)
DocuSigned by:
Mike Cortez
461A485021AB4789
(Signature)

(Signature)

Michael P. Cortez
(Print Name)

(Print Name)

District Engineer
(Title)

EGI Supervisor
(Title)

5/8/2024
(Date)

(Date)

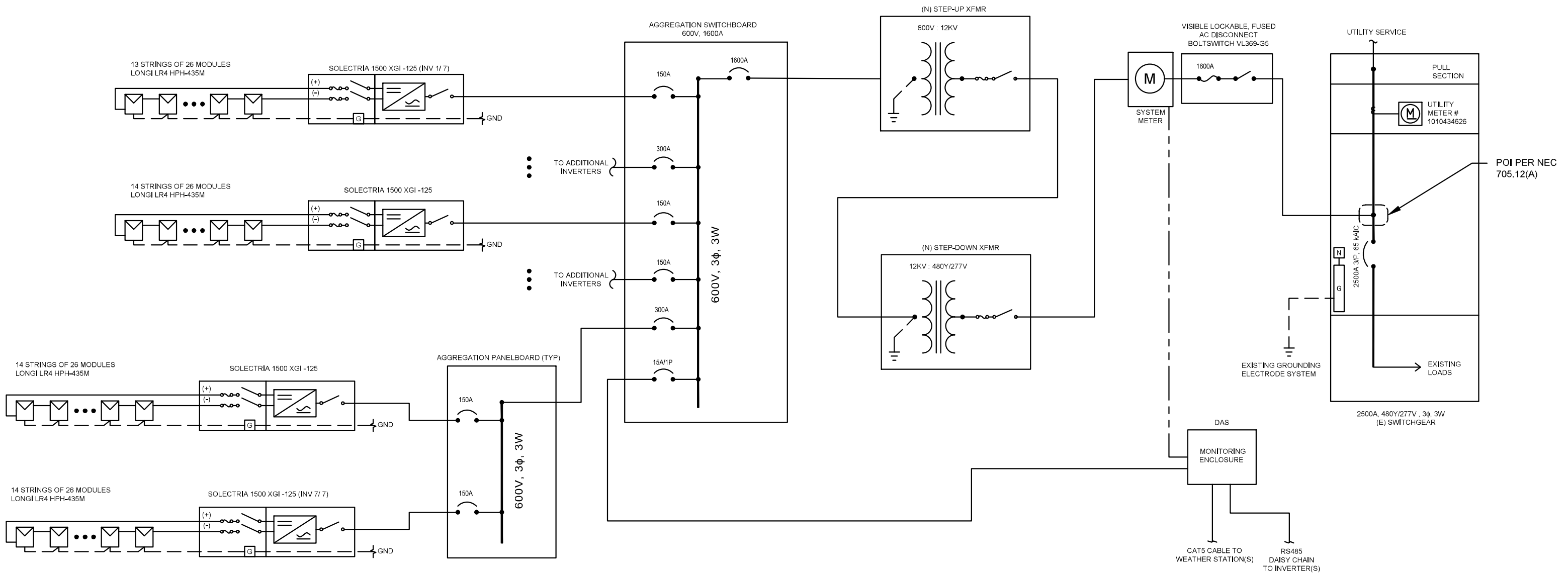


INTERCONNECTION AGREEMENT FOR
NET ENERGY METERING 2 (NEM2)
OF A RENEWABLE ELECTRIC GENERATING FACILITY
OF 1,000 KW OR LESS, EXCEPT NEM2 SOLAR OR WIND
FACILITIES OF 30 KW OR LESS, AND VIRTUAL NET
ENERGY METERING (NEM2V) OF A RENEWABLE
ELECTRIC GENERATING FACILITY OF 1,000 KW OR
LESS

APPENDIX A

DESCRIPTION OF GENERATING FACILITY
AND SINGLE-LINE DIAGRAM

(Provided by Customer-Generator)





INTERCONNECTION AGREEMENT FOR
NET ENERGY METERING 2 (NEM2)
OF A RENEWABLE ELECTRIC GENERATING FACILITY
OF 1,000 KW OR LESS, EXCEPT NEM2 SOLAR OR WIND
FACILITIES OF 30 KW OR LESS, AND VIRTUAL NET
ENERGY METERING (NEM2V) OF A RENEWABLE
ELECTRIC GENERATING FACILITY OF 1,000 KW OR
LESS

APPENDIX B (If Applicable)

Any Rule 2 or Rule 21 Agreements for the Installation or Allocation of
Special Facilities (Forms 79-255, 79-280, 79-702) or Agreements to
Perform Any Tariff Related Work (62-4527)
(Formed between the Parties)



**INTERCONNECTION AGREEMENT FOR
NET ENERGY METERING 2 (NEM2)
OF A RENEWABLE ELECTRIC GENERATING FACILITY
OF 1,000 KW OR LESS, EXCEPT NEM2 SOLAR OR WIND
FACILITIES OF 30 KW OR LESS, AND VIRTUAL NET
ENERGY METERING (NEM2V) OF A RENEWABLE
ELECTRIC GENERATING FACILITY OF 1,000 KW OR
LESS**

APPENDIX C

(NOT APPLICABLE TO SOLAR AND/OR WIND)

**SCHEDULE NEM2 CUSTOMER-GENERATOR WARRANTY THAT IT
MEETS THE REQUIREMENTS FOR AN ELIGIBLE CUSTOMER-
GENERATOR AND IS AN ELIGIBLE RENEWABLE ELECTRICAL
GENERATION FACILITY PURSUANT TO SECTION 2827 OF THE
CALIFORNIA PUBLIC UTILITIES CODE**

(This Affidavit is required every time a new NEM2 or NEM2V interconnection agreement for a Renewable Electrical Generation Facility is executed or whenever there is a change in ownership of the Generating Facility)

Check Type of Renewable Electrical Generation Facility:

<input type="checkbox"/> biomass	<input type="checkbox"/> geothermal	<input type="checkbox"/> municipal solid waste
<input type="checkbox"/> solar thermal	<input type="checkbox"/> fuel cell	<input type="checkbox"/> landfill gas
<input type="checkbox"/> small hydroelectric generation	<input type="checkbox"/> ocean wave	<input type="checkbox"/> digester gas
<input type="checkbox"/> ocean thermal	<input type="checkbox"/> tidal current	

NEM2 / NEM2V Customer-Generator (Customer) declares that

- (1) it meets the requirements to be an "Eligible Customer-Generator" and its Generating Facility.
- (2) (a) meets the requirements of an "Renewable Electrical Generation Facility", as defined in Section 2827(b)(5) of the California Public Utilities Code and (b) satisfies the definitions of the renewable resource for the Renewable Electrical Generation Facility in the latest version of the California Energy Commission's (CEC's) Renewables Portfolio Standard (RPS) Eligibility Guidebook and the Overall Program Guidebook.³ (Eligibility Requirements).

Included in these eligibility requirements (check as applicable) pursuant to Public Utilities Code section 2827(b)(5) and Public Resource Code Section 25741 paragraph 1(a):

³ The RPS Guidebooks can be found at: <https://www.energy.ca.gov/programs-and-topics/programs/renewables-portfolio-standard>



**INTERCONNECTION AGREEMENT FOR
NET ENERGY METERING 2 (NEM2)
OF A RENEWABLE ELECTRIC GENERATING FACILITY
OF 1,000 KW OR LESS, EXCEPT NEM2 SOLAR OR WIND
FACILITIES OF 30 KW OR LESS, AND VIRTUAL NET
ENERGY METERING (NEM2V) OF A RENEWABLE
ELECTRIC GENERATING FACILITY OF 1,000 KW OR
LESS**

If the Renewable Electrical Generation Facility is a fuel cell, or otherwise uses renewable biogas or otherwise, Eligible Customer-Generator warrants that the fuel cell is powered solely with renewable fuel.

If the Renewable Electrical Generation Facility is a Small hydroelectric generating facility, customer warrants that it will not cause an adverse impact on instream beneficial uses, nor cause a change in the volume or timing of streamflow).

If the Customer uses biogas or a renewable fuel as the fuel for their Renewable Electric Generation Facility:

Eligible Customer-Generator warrants that the Renewable Generation Facility is powered solely with renewable fuel.

Eligible Customer-Generator warrants that, beginning on the date of Initial Operation and continuing throughout the term of this Agreement, Eligible Customer-Generator and the Generating Facility shall continue to meet the Eligibility Requirements. If Eligible Customer-Generator or the Generating Facility ceases to meet the Eligibility Requirements, Eligible Customer-Generator shall promptly provide PG&E with Notice of such change pursuant to Section 10 of this Agreement. If at any time during the term of this Agreement PG&E determines, at its sole discretion, that Eligible Customer-Generator or Generating Facility may no longer meet the Eligibility Requirements, PG&E may require Eligible Customer-Generator to provide evidence that Eligible Customer-Generator and/or Generating Facility continues to meet the Eligibility Requirements, within 15 business days of PG&E's request for such evidence. Additionally, PG&E may periodically (typically, once per year) inspect Producer's Generating Facility and/or require documentation from Eligible Customer-Generator to monitor the Generating Facility's compliance with the Eligibility Requirements. If PG&E determines at its sole judgment that Eligible Customer-Generator either failed to provide evidence in a timely manner or that it provided insufficient evidence that its Generating Facility continues to meet the Eligibility Requirements, then the Eligibility Status shall be deemed ineffective until such time as Eligible Customer-Generator again demonstrates to PG&E's reasonable satisfaction that Eligible Customer-Generator meets the requirements for an Eligible Customer-Generator and/or the Generating Facility meets the requirements for a Eligible electrical generating facility (the Eligibility Status Change).

PG&E shall revise its records and the administration of this Agreement to reflect the Eligibility Status Change and provide Notice to Eligible Customer-Generator of the Eligibility Status Change pursuant to Section 10 of this Agreement. Such Notice shall specify the effective date of the Eligibility Status Change. This date shall be the first day of the calendar year for which PG&E determines in its sole discretion that the Eligible Customer-Generator and/or Generating Facility first ceased to meet the Eligibility Requirements. PG&E shall invoice the Eligible Customer-Generator for any tariff charges that were not previously billed during the period between the effective date of the Eligibility Status Change and the date of the Notice in reliance upon Eligible Customer-Generator's representations that Eligible Customer-Generator and/or Generating Facility complied with the Eligibility Requirements and therefore was eligible for the rate treatment available under the Net Energy Metering provisions of PG&E's Schedule NEM2 or NEM2V, Net Energy Metering Service for Eligible Customer-Generators.



INTERCONNECTION AGREEMENT FOR
NET ENERGY METERING 2 (NEM2)
OF A RENEWABLE ELECTRIC GENERATING FACILITY
OF 1,000 KW OR LESS, EXCEPT NEM2 SOLAR OR WIND
FACILITIES OF 30 KW OR LESS, AND VIRTUAL NET
ENERGY METERING (NEM2V) OF A RENEWABLE
ELECTRIC GENERATING FACILITY OF 1,000 KW OR
LESS

Any amounts to be paid or refunded by Eligible Customer-Generator, as may be invoiced by PG&E pursuant to the terms of this warranty, shall be paid to PG&E within 30 days of Eligible Customer-Generator's receipt of such invoice.

Unless otherwise ordered by the CPUC, this Agreement at all times shall be subject to such modifications as the CPUC may direct from time to time in the exercise of its jurisdiction.

I certify the above is true and correct,

Customer-Generator Signature: _____

Name: _____

Title: _____

Date: _____



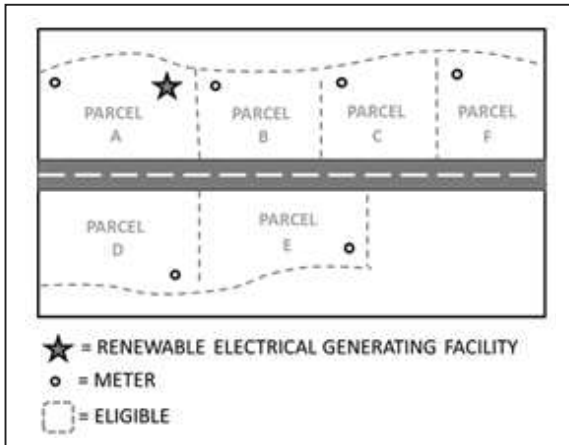
INTERCONNECTION AGREEMENT FOR NET ENERGY METERING 2 (NEM2) OF A RENEWABLE ELECTRIC GENERATING FACILITY OF 1,000 KW OR LESS, EXCEPT NEM2 SOLAR OR WIND FACILITIES OF 30 KW OR LESS, AND VIRTUAL NET ENERGY METERING (NEM2V) OF A RENEWABLE ELECTRIC GENERATING FACILITY OF 1,000 KW OR LESS

APPENDIX D NEM2 LOAD AGGREGATION APPENDIX (If Applicable)

Customer-Generator Declaration Warranting NEM2 Aggregation Is Located on Same or Adjacent or Contiguous Property to Generator Parcel

In accordance with Schedule NEM2, I, Customer-Generator represent and warrant under penalty of perjury that:

- 1) The total annual output in kWh of the generator is less than or equal to 100% of the annual aggregated electrical load in kWh of the meters within the arrangement, including the load on the generating account itself (before being offset by the generator), and including any estimated future additional load; and
- 2) Each of the aggregated account meters associated with this NEM2 generator account are located either:
 - (i) on the property where the renewable electrical generation facility is located, or
 - (ii) are located within an unbroken chain of contiguous parcels that are all solely owned, leased or rented by the customer-generator. For purposes of Load Aggregation, parcels that are divided by a street, highway, or public thoroughfare are considered contiguous, provided they are within an



unbroken chain of otherwise contiguous parcels that are all solely owned leased or rented by the customer-generator.

For example, assume there are five parcels (A, B, C, D, E, and F) that form a cluster of contiguous parcels and D and E are separated from A, B, C and F by a street, highway, or public thoroughfare. For the purposes of participating in Load Aggregation, all five parcels are considered contiguous, provided they are otherwise contiguous and all are solely owned, leased or rented by the customer-generator. Refer to the diagram at left (for illustrative purposes only.)

- 3) PG&E reserves the right to request a parcel map to confirm the property meets the requirements of 2) above; and
- 4) Customer-Generator agrees to notify PG&E if there is any change of status that makes any of the participating meters ineligible for meter aggregation to ensure that only eligible meters are participating; PG&E will require an updated Appendix and Declaration form; and



INTERCONNECTION AGREEMENT FOR
NET ENERGY METERING 2 (NEM2)
OF A RENEWABLE ELECTRIC GENERATING FACILITY
OF 1,000 KW OR LESS, EXCEPT NEM2 SOLAR OR WIND
FACILITIES OF 30 KW OR LESS, AND VIRTUAL NET
ENERGY METERING (NEM2V) OF A RENEWABLE
ELECTRIC GENERATING FACILITY OF 1,000 KW OR
LESS

5) Upon request by PG&E, I agree to provide documentation that all aggregated meters meet the requirements of Rate Schedule NEM2 Special Condition 6 including but not limited to parcel maps and ownership records.

Las Gallinas Valley Sanitary District
Customer Generator's Name

5/8/2024

Date

DocuSigned by:

Mike Cortez

461A485021AB476... *Signature*

Michael P. Cortez

Type/Print Name



INTERCONNECTION AGREEMENT FOR
NET ENERGY METERING 2 (NEM2)
OF A RENEWABLE ELECTRIC GENERATING FACILITY
OF 1,000 KW OR LESS, EXCEPT NEM2 SOLAR OR WIND
FACILITIES OF 30 KW OR LESS, AND VIRTUAL NET
ENERGY METERING (NEM2V) OF A RENEWABLE
ELECTRIC GENERATING FACILITY OF 1,000 KW OR
LESS

APPENDIX E
(If Applicable)

CUSTOMER-GENERATOR AFFIDAVIT WARRANTING THAT NEM2V
ARRANGEMENT IS SIZED TO LOAD

In accordance with Schedule NEM2V, I, Customer-Generator warrant that:

- 1) the Generator Account associated with this NEM2V agreement is sized to offset no more than part or all of the annual usage (kWh) requirements of all the Benefitting Accounts included in this NEM2V Arrangement, and
- 2) the Eligible Allocation Percentage established for each Benefitting Account is sized to offset no more than part or all or the annual usage (kWh) requirement for that specific Benefitting Account.

Service Address of Generator: N/A

Customer Generator's Name

Signature

Date

Type/Print Name

Title



INTERCONNECTION AGREEMENT FOR
NET ENERGY METERING 2 (NEM2)
OF A RENEWABLE ELECTRIC GENERATING FACILITY
OF 1,000 KW OR LESS, EXCEPT NEM2 SOLAR OR WIND
FACILITIES OF 30 KW OR LESS, AND VIRTUAL NET
ENERGY METERING (NEM2V) OF A RENEWABLE
ELECTRIC GENERATING FACILITY OF 1,000 KW OR
LESS

APPENDIX F
(If Applicable)
NEMV, NEM2V, NEMVMASH or NEM2VMSH Storage

Applicants adding storage pursuant to Schedules NEMV, NEM2V, NEMVMASH, or NEM2VMSH under the Special Condition for storage must include proper documentation per PG&E's Distribution Interconnection Handbook (DIH).



INTERCONNECTION AGREEMENT FOR NET ENERGY METERING 2 (NEM2) OF A RENEWABLE ELECTRIC GENERATING FACILITY OF 1,000 KW OR LESS, EXCEPT NEM2 SOLAR OR WIND FACILITIES OF 30 KW OR LESS, AND VIRTUAL NET ENERGY METERING (NEM2V) OF A RENEWABLE ELECTRIC GENERATING FACILITY OF 1,000 KW OR LESS

APPENDIX G

Operating Requirements for Energy Storage Device(s) (when applicable)

The following Operating Requirement(s) apply to the charging functions of the Generating Facility:

- Producer's storage device(s) will not consume power from Distribution Provider's Distribution System at any time.
Producer's storage device(s) will not cause the Host Load to exceed its normal peak demand.
To avoid upgrades or other technical mitigation items identified in the interconnection process, Producer has chosen the following Generating Facility operating constraint(s):

For the annual period between [Month/Day] and [Month/Day]

And during the hours of []

The storage device(s) will consume no more than a total of kW from the Distribution System.

This operating constraint voids the need for the following specific mitigation scope:

Table with 5 empty rows for specific mitigation scope details.

No other charging function limitation is required for this Generating Facility except the requirements above. Producer will be responsible for the costs of the corresponding upgrades or other technical mitigations if at any time the Producer elects to forego or violates the operating requirement.

Consistent with current load service Rules, Distribution Provider is not required to reserve capacity for load. Producer is responsible to contact the utility for any modification to its equipment or change in operations that may result in increased load demand per Electric Rule 3.C.

If any operating requirement is specified above, Distribution Provider reserves the right to ask for data at the 15-minute interval level at any time to verify that the operating requirement is being met.



**INTERCONNECTION AGREEMENT FOR
NET ENERGY METERING 2 (NEM2)
OF A RENEWABLE ELECTRIC GENERATING FACILITY
OF 1,000 KW OR LESS, EXCEPT NEM2 SOLAR OR WIND
FACILITIES OF 30 KW OR LESS, AND VIRTUAL NET
ENERGY METERING (NEM2V) OF A RENEWABLE
ELECTRIC GENERATING FACILITY OF 1,000 KW OR
LESS**

Distribution Provider will make such request via a written notice no more than once per calendar quarter. Producer must provide such data within 30 Calendar Days of the written request.

If the Generating Facility fails to adhere to the operating requirements at any time, it will be disconnected immediately in accordance with Rule 21 Section D.9 and not reconnected until an approved mitigation (e.g., supervising controls) is in place as determined by Distribution Provider.

Certificate Of Completion

Envelope Id: AAF6ADC050D9484DB1F70C89E68A6CB4	Status: Completed
Subject: Complete with DocuSign: ELEC_FORMS_79-1220-02 - LAS GALLINAS VALLEY SANITARY DISTRICT – Notific...	
Source Envelope:	
Document Pages: 23	Signatures: 2
Certificate Pages: 5	Initials: 1
AutoNav: Enabled	Envelope Originator:
Enveloped Stamping: Enabled	Melissa Reed
Time Zone: (UTC-08:00) Pacific Time (US & Canada)	100 Montgomery Street
	Suite 725
	San Francisco, CA 94104
	mreed@forefrontpower.com
	IP Address: 45.152.182.22


Record Tracking

Status: Original	Holder: Melissa Reed	Location: DocuSign
5/8/2024 12:10:49 PM	mreed@forefrontpower.com	

Signer Events

Mike Cortez
 mcortez@lgsd.org
 District Engineer
 Security Level: Email, Account Authentication (None)

Signature

DocuSigned by:

 461A485021AB476...
 Signature Adoption: Pre-selected Style
 Using IP Address: 98.47.64.82

Timestamp

Sent: 5/8/2024 12:15:20 PM
 Viewed: 5/8/2024 3:11:55 PM
 Signed: 5/8/2024 3:13:27 PM

Electronic Record and Signature Disclosure:
 Accepted: 5/8/2024 3:11:55 PM
 ID: 0a45494e-4c1c-4a56-b62d-9f40877bbbe2

In Person Signer Events

Signature

Timestamp

Editor Delivery Events

Status

Timestamp

Agent Delivery Events

Status

Timestamp

Intermediary Delivery Events

Status

Timestamp

Certified Delivery Events

Status

Timestamp

Carbon Copy Events

Status

Timestamp

Sheila Berger
 Interconnection@forefrontpower.com
 Security Level: Email, Account Authentication (None)

COPIED

Sent: 5/8/2024 12:15:21 PM
 Viewed: 5/8/2024 12:27:38 PM

Electronic Record and Signature Disclosure:
 Not Offered via DocuSign

Witness Events

Signature

Timestamp

Notary Events

Signature

Timestamp

Envelope Summary Events

Status

Timestamps

Envelope Sent	Hashed/Encrypted	5/8/2024 12:15:21 PM
Certified Delivered	Security Checked	5/8/2024 3:11:55 PM
Signing Complete	Security Checked	5/8/2024 3:13:27 PM
Completed	Security Checked	5/8/2024 3:13:27 PM