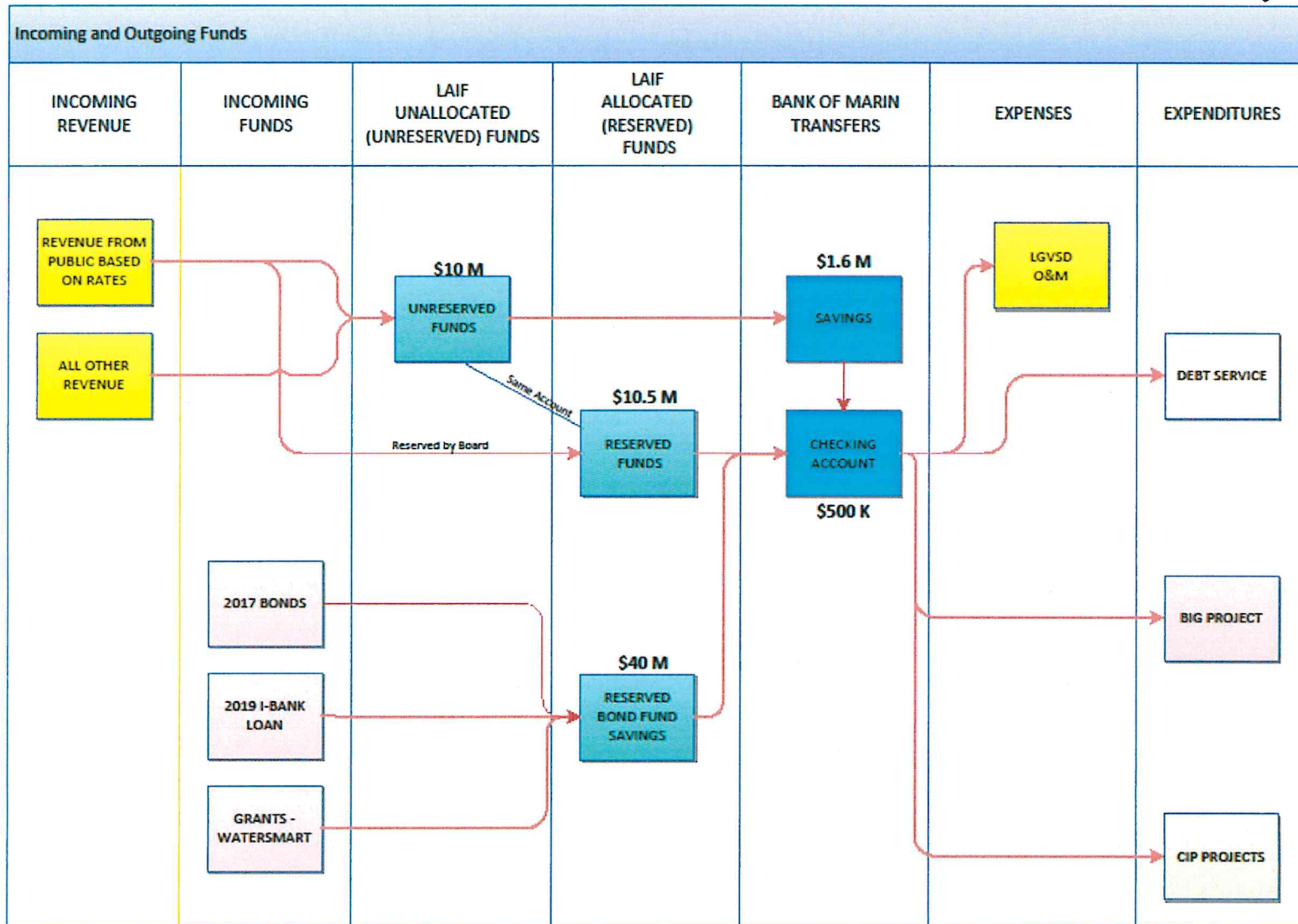


INCOMING AND OUTGOING FUNDS

replaces page 2.48



replaces page 2.71

Summary of Capital Outlay for 2019-20

(Continued)

Reclamation

MILLER CREEK REHAB	78,000
PASTURE IRRIGATION PUMP REBUILDS	40,000
STORAGE POND SLUICE GATE REPAIR	30,000
ST. VINCENT DISCHARGE LEVEE REPAIR	50,000
SHARP SOLAR PANEL REPLACEMENT	100,000
MARSH POND VEGETATION REMOVAL	150,000
SPARE 10HP FLYGT SUBMERSIBLE PUMP	10,000
BYPASS PUMP CONNECTION REPLACE	40,000
SMITH RANCH SUMP PUMP INSTALL	15,000