



101 Lucas Valley Road, Suite 300
 San Rafael, CA 94903
 Tel.: 415-472-1734
 Fax: 415-499-7715
 www.LGVSD.org

MANAGEMENT TEAM
 General Manager, Curtis Paxton
 Plant Operations, Mel Liebmann
 Collections/Safety/Maintenance, Greg Pease
 Engineering, Michael P. Cortez
 Administrative Services, Dale McDonald

DISTRICT BOARD
 Megan Clark
 Craig K. Murray
 Barry Nitzberg
 Gary E. Robards
 Crystal J. Yezman

ADDENDUM NO. 1

Date: September 26, 2024
 Project: **Rafael Meadows Pump Station Fencing Improvements**
 Job No.: 22300-01

To: All Planholders and Prospective Bidders

The following changes and/or clarifications are hereby made to the Contract Documents and shall become a part of the Contract Documents dated August 2024.

1. Revised Bid Schedule: The Bid Schedule has been revised. Use attached revised Bid Schedule for the proposal.
2. Revised Drawings: The Drawings have been revised. Use attached revised Drawings for the proposal.
3. Bid Opening: Refer to NOTICE INVITING INFORMAL BIDS, Paragraph 2, Page 5: Bid opening has been rescheduled for **Thursday, October 10, 2024 at 11:00 AM**.

Questions Received from Proposers/Bidders:

The following questions were submitted on or before 9/26/2024, questions that are received after the bid question deadline may not be answered in addendum. LGVSD responses to the questions are in bold.

Q1. Should we ignore the reference to the 1-1/4” sch. 40 pipe top rail shown on the “TWISTED AND BARBED SELVAGE” detail shown on sheet 2? There are other/multiple references throughout that same sheet that would indicate a tension wire is to be installed at the top of this fence (in-lieu of a pipe rail) so I’d just like to confirm.

Response: The specified Type A - Black Vinyl Coated Fencing with 3-Wire Black Vinyl Coated Barbed Wire has a nominal height of 7’. Per note # (4) on Sheet 2 of the Drawings, contractor shall use Twisted and Barbed Selvage (Type II Fence) for the project, which requires a 1-1/4” Schedule 40 pipe as top rail of the fencing.

Q2. Is the barbed wire material to be provided in a black finish or is the standard galvanized finish acceptable for this material?

Response: The barbed wire material shall be black vinyl coated to match the chain link fencing.

Q3. My apologies if this information is provided and I’m simply overlooking it but I’m not finding the chain link diamond mesh dimension on the project documents. Can you please confirm this dimension (typical = 2”).

Response: The chain link mesh size shall be 2”.

Q4. Does this project have a Buy America/Buy American requirement?

Response: Both types of fencing specified for the project shall meet Buy American Act requirements.

Q5. Does the black vinyl coated chain link requires barbwire on top? Page 132 calls out for both fence with barbwire and fence with no barbwire.

Response: The black vinyl coated chain link fencing requires black vinyl coated barbed wire on top (see Q1 and Q2 above).

Q6. Can you specify the height of the chain link fence to be replaced, existing is 6' ft tall – are we maintaining the same height or going 7 / 8 ft tall?

Response: The specified Type B – Gauntlet Fencing and Type A - Black Vinyl Coated Fencing with 3-Wire Black Vinyl Coated Barbed Wire both have a nominal height of 7'.

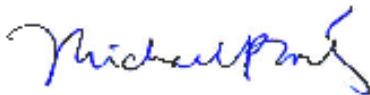
Q7. The details on page 132 of 133 show the chain link fence without barb wire. However there is a small detail showing barb wire and the existing chain link fence at the site does have barb wire. Please clarify, if the fence gets barb wire.

Response: The black vinyl coated chain link fencing requires black vinyl coated barbed wire on top (see Q1 and Q2 above).

This addendum consists of nine (9) pages including this page and attachments. Acknowledge receipt of this addendum in the space provided on page 13 of 133, Proposal Cover Page and Bid Schedule, of the Bid Forms, and by signing in the space provided below. Submit an original copy of this addendum cover page along with the bid. Failure to do so may disqualify the bidder.

Las Gallinas Valley Sanitary District:

Bidder: _____



Michael P. Cortez, PE, District Engineer

(Authorized Signature)

(Date)

SCHEDULE OF LUMP SUM BID ITEMS: (Lump Sum Bid Items 1, 2a, 2b, & 2c):

1. Mobilization, Demobilization, and General Conditions: Lump sum price for preparatory work and operations and establishment of other facilities necessary to work on the Project, including but not limited to labor compliance, prevailing wage compliance, all General Conditions requirements, demobilization, cleanup, and surface restoration to the satisfaction of the District at the completion of the Project.

Lump Sum Price: \$ _____ (In figures)

2. For the construction of **Option 1 – Type B - Gauntlet Fencing** consisting of the following complete in place as shown and specified:
 - a. Nominal 7' high fencing along the pump station property line, including but not limited to off-site disposal of all construction debris and existing fencing and gate components removed from the site, freight, all applicable taxes, labor, clearing of vegetation, and incidental work for successful completion of the project. **Actual cost may vary and shall be adjusted to unit price shown multiplied by the actual lineal footage of the fencing installed. Quantity is subject to changes per actual field measurements.**

650 LF x Unit Price of \$ _____ (In figures)

Extended Price: \$ _____ (In figures)

- b. Installation of one (1) 16-ft wide by 7' high (nominal) vehicle access rolling gate with electronic opener and required accessories for the automated gate system. Work shall include but not limited to furnishing and installation of:
 - i. One (1) 2' x 2' concrete gate operator pad
 - ii. One (1) 12" wide x 12" deep concrete strip for the bolted steel ground track
 - iii. One (1) automatic slide gate operator (Max Pro 2200 or equal)
 - iv. Two (2) photo eye sets
 - v. One (1) Knox gate & key switch
 - vi. Programming of keypad and remote controls
 - vii. All other accessories and components necessary for the installation of the automated gate system.

Lump Sum Price: \$ _____ (In figures)

- c. Installation of one (1) 10-ft wide by 7' high (nominal) pedestrian double swing gate.

Lump Sum Price: \$ _____ (In figures)

TOTAL BASE BID, BASIS OF AWARD (SUM OF BID ITEMS 1 + 2a + 2b + 2c):

\$ _____
(In figures)

BID ALTERNATES: The undersigned Bidder offers to make, at the following Bid Alternate prices, the change in the Work covered by the Total Base Bid that is specified in the Bid Alternate priced below. It is understood that:

1. A price must be filled in for each Bid Alternate item.
2. The acceptance or rejection of the Bid Alternate is at the option of the District.
3. Acceptance or rejection of the Bid Alternate will not necessarily be made on the basis of price alone.
4. The acceptance or rejection of the Bid Alternate will not affect the Total Base Bid or other conditions of the Base Bid items listed above except as specifically noted in the Alternate Bid Schedule.
5. The original Total Base Bid, without deduction or addition shown herein, shall be the basis of award.
6. The costs shown herein for Bid Alternate Items is the net adjustment that is to be applied to the Total Base Bid when calculating the Contract Price if the Bid Alternate is accepted by the District.
7. The final Contract Price shall be the net amount determined by applying the Total Base Bid and any adjustment made by the District regarding the approved and awarded Bid Alternate items.
8. The listed costs shall include changes to mobilization, taxes, permits, overhead and profit, as it relates to each individual alternate item.

A. Alternate Bid Item 1:

The deductive cost for substituting **Option 2 - Type B - Gauntlet Fencing** in lieu of **Option 1 - Type B - Gauntlet Fencing**.

210 LF (650 LF minus 440 LF) x Unit Price of \$ _____ (In figures)

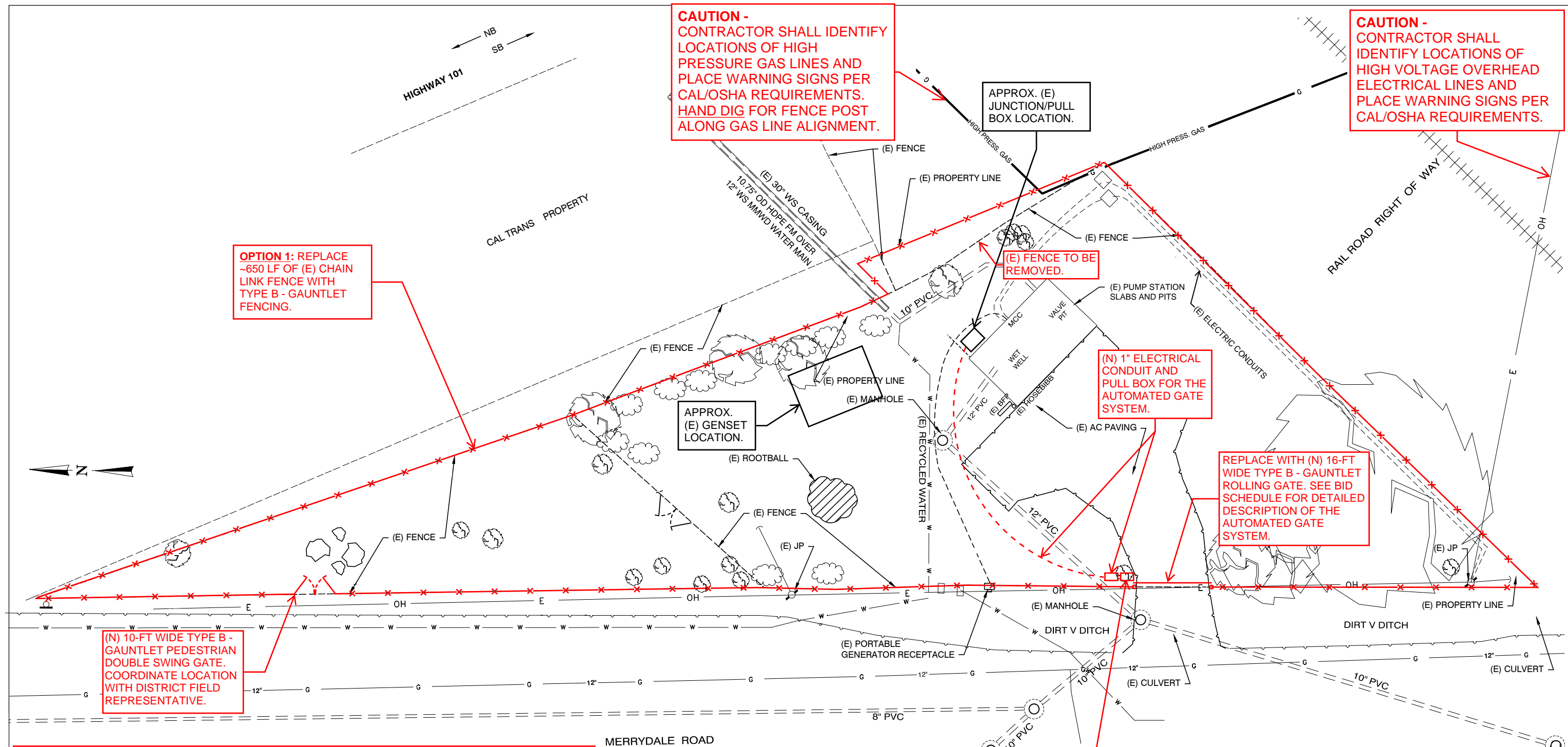
Extended Deductive Price: \$ _____ (In figures)

B. Alternate Bid Item 2:

The deductive cost for substituting **Option 3 - Type A - Black Vinyl Coated Fencing with 3-Wire Black Vinyl Coated Barbed Wire** in lieu of **Option 1 - Type B - Gauntlet Fencing**.

650 LF x Unit Price of \$ _____ (In figures)

Extended Deductive Price: \$ _____ (In figures)



CAUTION -
CONTRACTOR SHALL IDENTIFY
LOCATIONS OF HIGH
PRESSURE GAS LINES AND
PLACE WARNING SIGNS PER
CAL/OSHA REQUIREMENTS.
HAND DIG FOR FENCE POST
ALONG GAS LINE ALIGNMENT.

CAUTION -
CONTRACTOR SHALL
IDENTIFY LOCATIONS OF
HIGH VOLTAGE OVERHEAD
ELECTRICAL LINES AND
PLACE WARNING SIGNS PER
CAL/OSHA REQUIREMENTS.

OPTION 1: REPLACE
~650 LF OF (E) CHAIN
LINK FENCE WITH
TYPE B - GAUNTLET
FENCING.

(E) FENCE TO BE
REMOVED.

(N) 1" ELECTRICAL
CONDUIT AND
PULL BOX FOR THE
AUTOMATED GATE
SYSTEM.

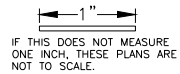
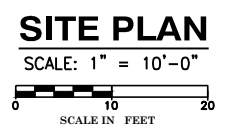
REPLACE WITH (N) 16-FT
WIDE TYPE B - GAUNTLET
ROLLING GATE. SEE BID
SCHEDULE FOR DETAILED
DESCRIPTION OF THE
AUTOMATED GATE
SYSTEM.

(N) 10-FT WIDE TYPE B -
GAUNTLET PEDESTRIAN
DOUBLE SWING GATE.
COORDINATE LOCATION
WITH DISTRICT FIELD
REPRESENTATIVE.

(N) KEYPAD. COORDINATE
LOCATION WITH DISTRICT
FIELD REPRESENTATIVE.

- NOTES:**
- 1) NEW WORK ITEMS ON THIS SHEET ARE SHOWN IN RED.
 - 2) SEE SHEETS 2 AND/OR 3 FOR FENCING AND GATE DETAILS.
 - 3) THE DISTRICT HIRED A SURVEYOR TO CONDUCT BOUNDARY SURVEY AND STAKING. SURVEY INFO WILL BE PROVIDED PRIOR TO START OF CONSTRUCTION.
 - 4) COST SHALL BE ADJUSTED BY ACTUAL LF OF FENCING INSTALLED IN THE FIELD.
 - 5) CONTRACTOR SHALL PROVIDE PRODUCT SUBMITTAL OF THE PROPOSED CHAIN LINK FENCE AND/OR GAUNTLET FENCE, AND AUTOMATED GATE SYSTEM FOR DISTRICT REVIEW AND APPROVAL PRIOR TO ORDERING MATERIALS.
 - 6) CONTRACTOR SHALL FIELD VERIFY DIMENSIONS PRIOR TO PLACING AN ORDER.
 - 7) PROTECT EXISTING UTILITIES AND TREES IN PLACE DURING CONSTRUCTION.
 - 8) WORK SHALL INCLUDE OFF-SITE DISPOSAL OF CONSTRUCTION DEBRIS AND EXISTING FENCING AND GATE MATERIALS REMOVED FROM THE SITE.
 - 9) CALL FOR USA FOR MARKINGS PRIOR TO DIGGING.
 - 10) HAND DIG WITH PRECAUTION TO AVOID HITTING THE FORCE MAIN AND OTHER UNDERGROUND UTILITIES SHOWN OR NOT SHOWN ON THIS SHEET.
 - 11) UTILITY LOCATIONS SHOWN ARE APPROXIMATE.

OPTION 1: TYPE B - GAUNTLET FENCING



JOB NO. 22300-01
LAS GALLINAS VALLEY SANITARY DISTRICT
MARIN COUNTY, CALIFORNIA

RAFAEL MEADOWS PUMP STATION
FENCING IMPROVEMENTS

RAFAEL MEADOWS PUMP STATION
SITE PLAN

CHECKED M. CORTEZ	DRAWN I. HUANG	SCALE SHOWN
APPROVED CURTIS PAXTON	DESIGNED M. CORTEZ	DATE 8/27/24
GENERAL MANAGER CURTIS PAXTON		DISTRICT ENGINEER MICHAEL P. CORTEZ
RCE # 54039		REVISION NO.

SHEET 1A OF 3

NO.	DATE	DESCRIPTION	BY	APPROV.
REVISIONS				

PLOT: EXTEND
SCALE: 1:1
BORDER:
22,34
COLOR: No.
RED 0.70MM
YELLOW 0.20MM
GREEN 0.25MM
CYAN 0.40MM
BLUE 0.50MM
MAGENTA 0.20MM
WHITE 0.35MM
GRAY 0.15MM
9 0.15MM
10 1.00MM
100 0.70MM
210 0.60MM

CAUTION -
CONTRACTOR SHALL IDENTIFY
LOCATIONS OF HIGH
PRESSURE GAS LINES AND
PLACE WARNING SIGNS PER
CAL/OSHA REQUIREMENTS.
HAND DIG FOR FENCE POST
ALONG GAS LINE ALIGNMENT.

CAUTION -
CONTRACTOR SHALL
IDENTIFY LOCATIONS OF
HIGH VOLTAGE OVERHEAD
ELECTRICAL LINES AND
PLACE WARNING SIGNS PER
CAL/OSHA REQUIREMENTS.

OPTION 2: REPLACE
~440 LF OF (E) CHAIN
LINK FENCE WITH
TYPE B - GAUNTLET
FENCING.

(E) FENCE TO BE
REMOVED.

(N) 1" ELECTRICAL
CONDUIT AND PULL
BOX FOR THE
AUTOMATED GATE
SYSTEM.

REPLACE WITH (N) 16-FT
WIDE TYPE B - GAUNTLET
ROLLING GATE. SEE BID
SCHEDULE FOR DETAILED
DESCRIPTION OF THE
AUTOMATED GATE
SYSTEM.

(N) 10-FT WIDE TYPE B -
GAUNTLET PEDESTRIAN
DOUBLE SWING GATE.
COORDINATE LOCATION
WITH DISTRICT FIELD
REPRESENTATIVE.

(N) KEYPAD. COORDINATE
LOCATION WITH DISTRICT
FIELD REPRESENTATIVE.

- NOTES:**
- 1) NEW WORK ITEMS ON THIS SHEET ARE SHOWN IN RED.
 - 2) SEE SHEETS 2 AND/OR 3 FOR FENCING AND GATE DETAILS.
 - 3) THE DISTRICT HIRED A SURVEYOR TO CONDUCT BOUNDARY SURVEY AND STAKING. SURVEY INFO WILL BE PROVIDED PRIOR TO START OF CONSTRUCTION.
 - 4) COST SHALL BE ADJUSTED BY ACTUAL LF OF FENCING INSTALLED IN THE FIELD.
 - 5) CONTRACTOR SHALL PROVIDE PRODUCT SUBMITTAL OF THE PROPOSED CHAIN LINK FENCE AND/OR GAUNTLET FENCE, AND AUTOMATED GATE SYSTEM FOR DISTRICT REVIEW AND APPROVAL PRIOR TO ORDERING MATERIALS.
 - 6) CONTRACTOR SHALL FIELD VERIFY DIMENSIONS PRIOR TO PLACING AN ORDER.
 - 7) PROTECT EXISTING UTILITIES AND TREES IN PLACE DURING CONSTRUCTION.
 - 8) WORK SHALL INCLUDE OFF-SITE DISPOSAL OF CONSTRUCTION DEBRIS AND EXISTING FENCING AND GATE MATERIALS REMOVED FROM THE SITE.
 - 9) CALL FOR USA FOR MARKINGS PRIOR TO DIGGING.
 - 10) HAND DIG WITH PRECAUTION TO AVOID HITTING THE FORCE MAIN AND OTHER UNDERGROUND UTILITIES SHOWN OR NOT SHOWN ON THIS SHEET.
 - 11) UTILITY LOCATIONS SHOWN ARE APPROXIMATE.

OPTION 2: TYPE B - GAUNTLET FENCING

SITE PLAN
SCALE: 1" = 10'-0"
0 10 20
SCALE IN FEET

1" = 10'
IF THIS DOES NOT MEASURE
ONE INCH, THESE PLANS ARE
NOT TO SCALE.

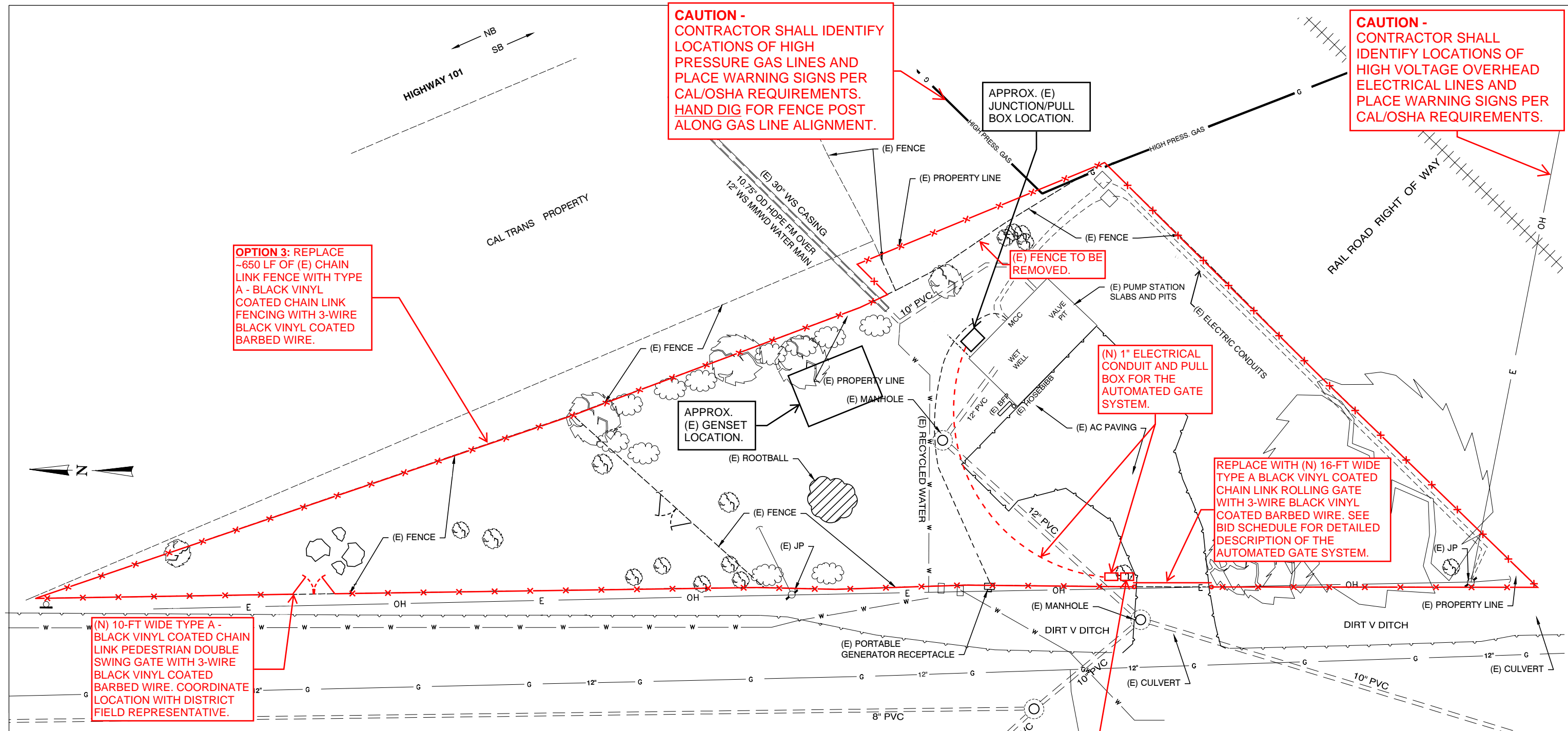
JOB NO. 22300-01
LAS GALLINAS VALLEY SANITARY DISTRICT
MARIN COUNTY, CALIFORNIA
RAFAEL MEADOWS PUMP STATION
FENCING IMPROVEMENTS
RAFAEL MEADOWS PUMP STATION
SITE PLAN

CHECKED M. CORTEZ	DRAWN I. HUANG	SCALE SHOWN
APPROVED CURTIS PAXTON	DESIGNED M. CORTEZ	DATE 8/27/24
GENERAL MANAGER CURTIS PAXTON		DISTRICT ENGINEER MICHAEL P. CORTEZ
RCE # 54039		

SHEET 1B OF 3
PLAN NO. DRAWING NO. REVISION NO.

NO.	DATE	DESCRIPTION	BY	APPROV.
REVISIONS				

PLOT: EXTEND
SCALE: 1:1
BORDER:
22,34
COLOR: No.
RED 0.70MM
YELLOW 0.20MM
GREEN 0.25MM
CYAN 0.40MM
BLUE 0.50MM
MAGENTA 0.20MM
WHITE 0.35MM
GRAY 0.15MM
9 0.15MM
10 1.00MM
100 0.70MM
210 0.60MM



CAUTION -
CONTRACTOR SHALL IDENTIFY LOCATIONS OF HIGH PRESSURE GAS LINES AND PLACE WARNING SIGNS PER CAL/OSHA REQUIREMENTS. HAND DIG FOR FENCE POST ALONG GAS LINE ALIGNMENT.

CAUTION -
CONTRACTOR SHALL IDENTIFY LOCATIONS OF HIGH VOLTAGE OVERHEAD ELECTRICAL LINES AND PLACE WARNING SIGNS PER CAL/OSHA REQUIREMENTS.

OPTION 3: REPLACE ~650 LF OF (E) CHAIN LINK FENCE WITH TYPE A - BLACK VINYL COATED CHAIN LINK FENCING WITH 3-WIRE BLACK VINYL COATED BARBED WIRE.

(E) FENCE TO BE REMOVED.

(N) 1" ELECTRICAL CONDUIT AND PULL BOX FOR THE AUTOMATED GATE SYSTEM.

REPLACE WITH (N) 16-FT WIDE TYPE A BLACK VINYL COATED CHAIN LINK ROLLING GATE WITH 3-WIRE BLACK VINYL COATED BARBED WIRE. SEE BID SCHEDULE FOR DETAILED DESCRIPTION OF THE AUTOMATED GATE SYSTEM.

(N) 10-FT WIDE TYPE A - BLACK VINYL COATED CHAIN LINK PEDESTRIAN DOUBLE SWING GATE WITH 3-WIRE BLACK VINYL COATED BARBED WIRE. COORDINATE LOCATION WITH DISTRICT FIELD REPRESENTATIVE.

(N) KEYPAD. COORDINATE LOCATION WITH DISTRICT FIELD REPRESENTATIVE.

- NOTES:**
- 1) NEW WORK ITEMS ON THIS SHEET ARE SHOWN IN RED.
 - 2) SEE SHEETS 2 AND/OR 3 FOR FENCING AND GATE DETAILS.
 - 3) THE DISTRICT HIRED A SURVEYOR TO CONDUCT BOUNDARY SURVEY AND STAKING. SURVEY INFO WILL BE PROVIDED PRIOR TO START OF CONSTRUCTION.
 - 4) COST SHALL BE ADJUSTED BY ACTUAL LF OF FENCING INSTALLED IN THE FIELD.
 - 5) CONTRACTOR SHALL PROVIDE PRODUCT SUBMITTAL OF THE PROPOSED CHAIN LINK FENCE AND/OR GAUNTLET FENCE, AND AUTOMATED GATE SYSTEM FOR DISTRICT REVIEW AND APPROVAL PRIOR TO ORDERING MATERIALS.
 - 6) CONTRACTOR SHALL FIELD VERIFY DIMENSIONS PRIOR TO PLACING AN ORDER.
 - 7) PROTECT EXISTING UTILITIES AND TREES IN PLACE DURING CONSTRUCTION.
 - 8) WORK SHALL INCLUDE OFF-SITE DISPOSAL OF CONSTRUCTION DEBRIS AND EXISTING FENCING AND GATE MATERIALS REMOVED FROM THE SITE.
 - 9) CALL FOR USA FOR MARKINGS PRIOR TO DIGGING.
 - 10) HAND DIG WITH PRECAUTION TO AVOID HITTING THE FORCE MAIN AND OTHER UNDERGROUND UTILITIES SHOWN OR NOT SHOWN ON THIS SHEET.
 - 11) UTILITY LOCATIONS SHOWN ARE APPROXIMATE.

MERRYDALE ROAD

OPTION 3: TYPE A - BLACK VINYL COATED CHAIN LINK FENCING WITH 3-WIRE BLACK VINYL COATED BARBED WIRE

SITE PLAN
SCALE: 1" = 10'-0"
0 10 20
SCALE IN FEET

1" = 10'
IF THIS DOES NOT MEASURE ONE INCH, THESE PLANS ARE NOT TO SCALE.

JOB NO. 22300-01
LAS GALLINAS VALLEY SANITARY DISTRICT
MARIN COUNTY, CALIFORNIA

RAFAEL MEADOWS PUMP STATION
FENCING IMPROVEMENTS

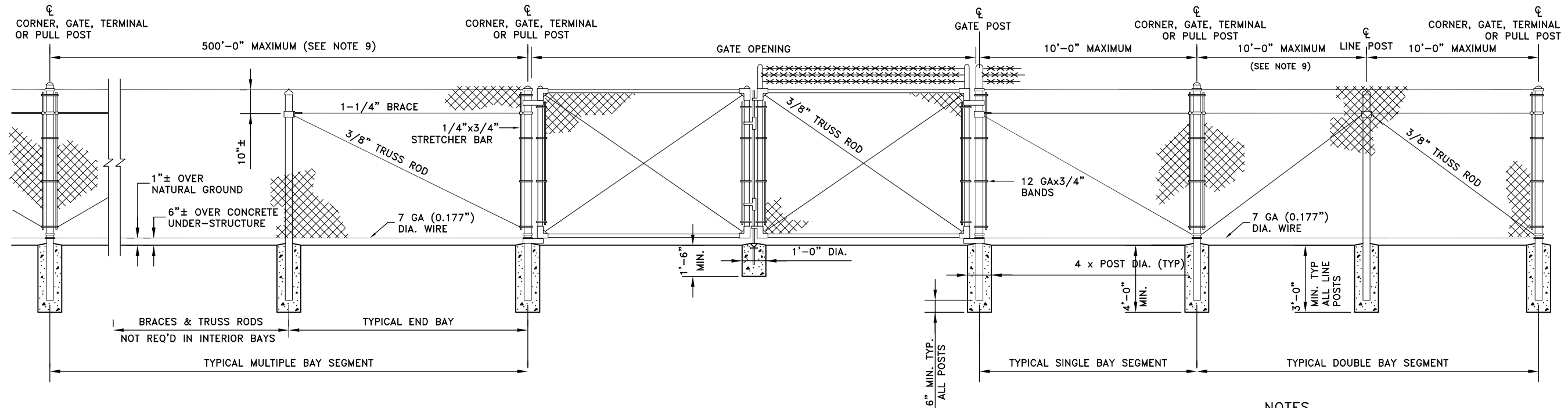
RAFAEL MEADOWS PUMP STATION
SITE PLAN

CHECKED M. CORTEZ	DRAWN I. HUANG	SCALE SHOWN
APPROVED CURTIS PAXTON	DESIGNED M. CORTEZ	DATE 8/27/24
GENERAL MANAGER CURTIS PAXTON		DISTRICT ENGINEER MICHAEL P. CORTEZ

SHEET 1C OF 3	PLAN NO.	DRAWING NO.	REVISION NO.
------------------	----------	-------------	--------------

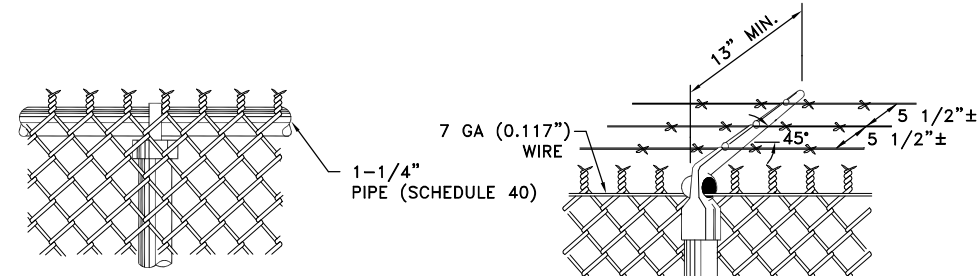
NO.	DATE	DESCRIPTION	BY	APPROV.
REVISIONS				

PLOT: EXTEND
SCALE: 1:1
BORDER:
22,34
COLOR: No.
RED 0.70MM
YELLOW 0.20MM
GREEN 0.25MM
CYAN 0.40MM
BLUE 0.50MM
MAGENTA 0.20MM
WHITE 0.35MM
GRAY 0.15MM
9 0.15MM
10 1.00MM
100 0.70MM
210 0.60MM

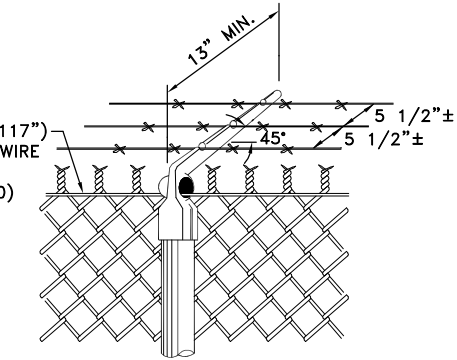


NOTES

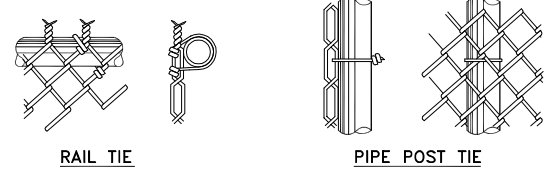
- (1) MATERIALS, CONSTRUCTION AND WORKMANSHIP SHALL BE IN ACCORDANCE WITH THE WRITTEN SPECIFICATIONS.
- (2) THE TYPE OF TOP SUPPORT IS SPECIFIED IN THE SPECIFICATIONS, TYPE I, TENSION WIRE AND TYPE II, TUBULAR RAIL.
- (3) BARBED WIRE SHALL BE USED ONLY WHEN INDICATED ON THE PLANS AND IN THE SPECIFICATIONS.
- (4) TWISTED AND BARBED SELVAGE, TOP AND BOTTOM, SHALL BE USED ON FENCES FIVE FEET OR GREATER IN HEIGHT.
- (5) KNUCKLED SELVAGE ON TOP AND TWISTED AND BARBED SELVAGE ON BOTTOM SHALL BE USED ON FENCES LESS THAN FIVE FEET IN HEIGHT.
- (6) ALL STEEL PIPE MEMBERS SHALL CONFORM TO THE REQUIREMENTS OF ASTM F1043 GROUP 1A, SCHEDULE 40, HOT DIPPED ZINC COATED STEEL PIPE.
- (7) OPTIONS EXERCISED SHALL BE UNIFORM THROUGHOUT THE PROJECT.
- (8) LINE POSTS SHALL BE LOCATED AT EQUAL SPACING FOR EACH SEGMENT WITH MAXIMUM SPACING AS FOLLOWS:
 - A. TANGENT SECTIONS TO 500 FEET RADIUS - NOT MORE THAN 10 FEET.
 - B. UNDER 500 FEET RADIUS TO 200 FEET RADIUS - NOT MORE THAN 8 FEET.
 - C. UNDER 200 FEET RADIUS TO 100 FEET RADIUS - NOT MORE THAN 6 FEET.
 - D. UNDER 100 FEET RADIUS - NOT MORE THAN 5 FEET.
- (9) THE MINIMUM HEIGHT OF FABRIC ON FENCES AND GATES SHALL BE 6 FEET.
- (10) ALL CONCRETE SHALL HAVE A MINIMUM OF 5 SACKS OF CEMENT PER CUBIC YARD, OR 28-DAY COMPRESSIVE STRENGTH OF 2,500 PSI.
- (11) FASTEN FABRIC TO TOP AND BOTTOM TENSION CABLE AT 18 INCH INTERVALS. FASTEN TO LINE POSTS AT 12 INCH INTERVALS.



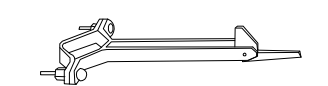
TWISTED AND BARBED SELVAGE
(TYPE II FENCE)



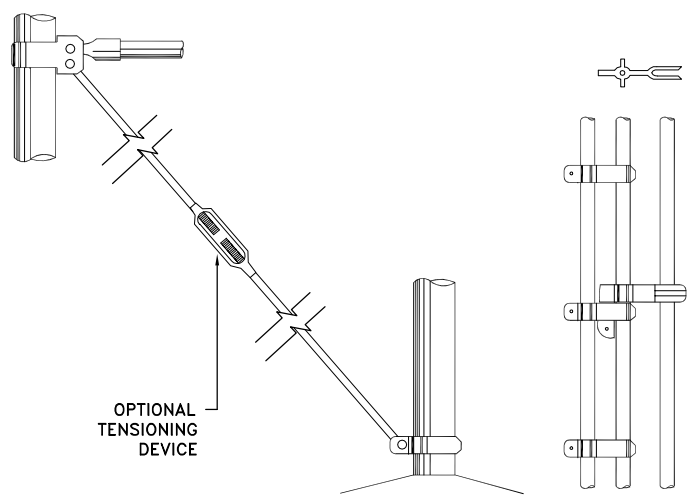
BARBED WIRE ARM AND TENSION WIRE
(SHOWING TYPICAL TENSION WIRE TIE)
(TYPE I FENCE)



TYPICAL TIE DETAILS



GATE HOLD BACK

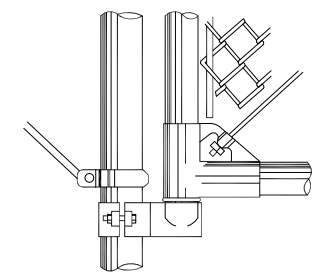


BRACE AND TRUSS CONNECTIONS

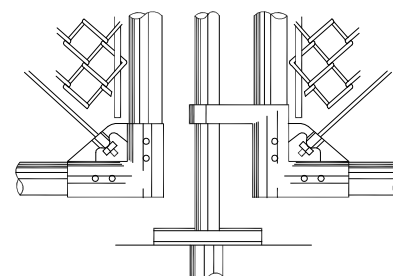
DROP ROD ASSEMBLY

GATES			
GATE POSTS AND GATE FRAMES			
HEIGHT	GATE OPENING		GATE POST
UNDER 6 FEET	SINGLE TO 6' OR DOUBLE TO 12'		2"
	SINGLE OVER 6' TO 8' OR DOUBLE OVER 12' TO 16'		2-1/2"
	SINGLE OVER 8' TO 12' OR DOUBLE 16' TO 24'		3-1/2"
6 FEET AND OVER	SINGLE TO 6' OR DOUBLE TO 12'		2-1/2"
	SINGLE OVER 6' TO 13' OR DOUBLE OVER 12' TO 24'		4"
	SINGLE OVER 13' TO 18' OR DOUBLE OVER 24' TO 36'		6"
	SINGLE OVER 18' OR DOUBLE OVER 36'		8"

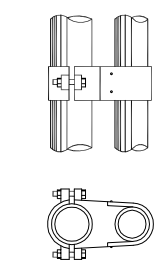
GAGE OF FABRIC	HEIGHT OF FABRIC	LENGTH OF END, CORNER OR PULL POSTS	LENGTH OF LINE POSTS	SIZE OF POSTS				GATE POST
				END, CORNER & PULL PIPE OPTION	RECTANGULAR OPTION	PIPE OPTION	H POST OPTION	
9	7'	10'	9'-8"	2-1/2"	3-1/2"	2"	1-7/8"x1-5/8"	SEE GATE POST TABLE
9	6'	9'	8'-8"	2-1/2"	3-1/2"	2"	1-7/8"x1-5/8"	
9	5'	8'	7'-8"	2"	3-1/2"	1-1/2"	1-5/16"x1-1/2"	
9	4'	6'	5'-8"	2"	3-1/2"	1-1/2"	1-5/16"x1-1/2"	
9	3'	5'	4'-8"	2"	3-1/2"	1-1/2"	1-5/16"x1-1/2"	



BOTTOM GATE HINGE AND GATE DETAILS



CENTER GATE STOP AND GATE DETAILS



TOP GATE HINGE

(NOTE: OPTIONAL WELDED OR RIVETED CONSTRUCTION)

CHAIN LINK FENCE 146
SCALE: NTS

JOB NO. 22300-01
LAS GALLINAS VALLEY SANITARY DISTRICT
MARIN COUNTY, CALIFORNIA

RAFAEL MEADOWS PUMP STATION FENCING IMPROVEMENTS

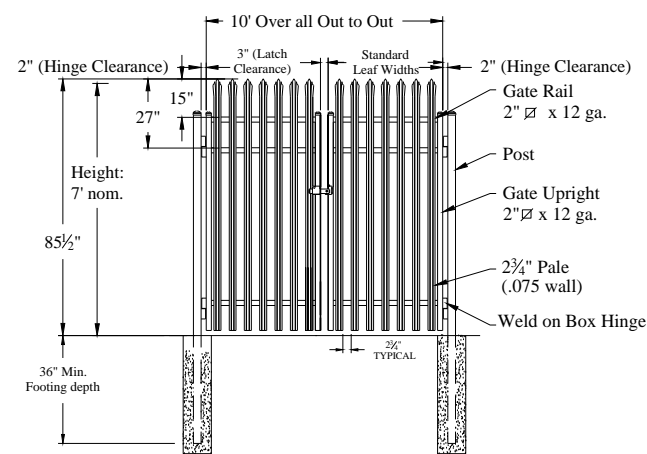
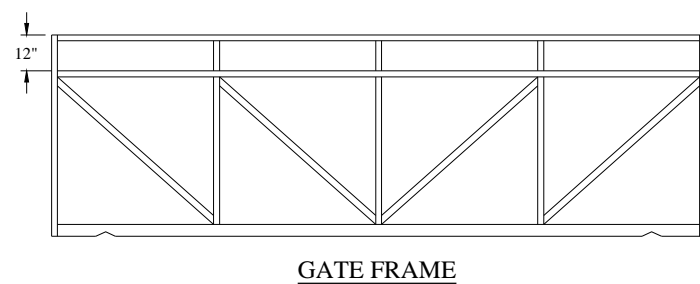
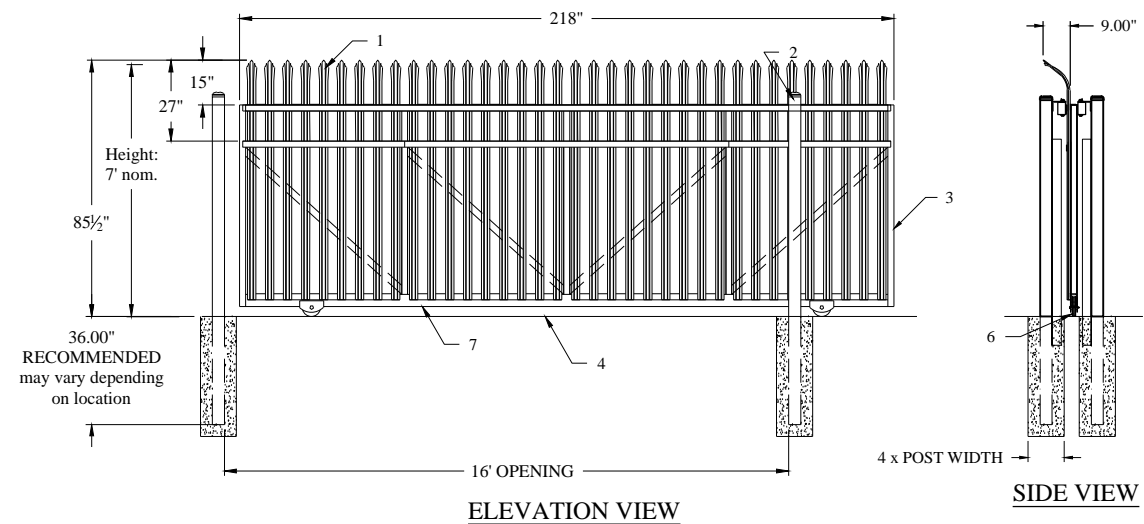
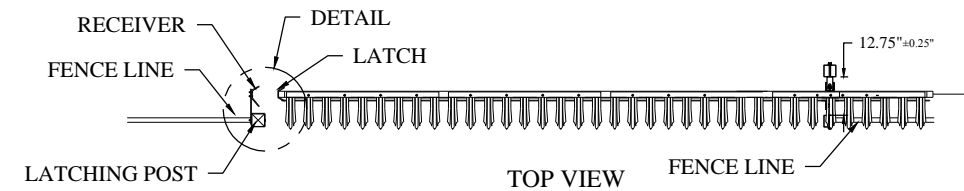
FENCE AND GATE DETAILS
(TYPE A - BLACK VINYL COATED)

WBS	CHECKED M. CORTEZ	DRAWN	SCALE AS SHOWN
	APPROVED CURTIS PAXTON	DESIGNED M. CORTEZ	DATE 8/27/24
	GENERAL MANAGER	DISTRICT ENGINEER	
	CURTIS PAXTON	Michael P Cortez	
		RCE # 54038	

NO.	DATE	DESCRIPTION	BY	APPR'D
REVISIONS				
2		of 3		

PLOTTED: EXTEND
 SCALE: 1:1
 BORDER: 22,34
 COLOR: No.
 RED 0.70MM
 YELLOW 0.20MM
 GREEN 0.25MM
 CYAN 0.40MM
 BLUE 0.50MM
 MAGENTA 0.20MM
 WHITE 0.35MM
 GRAY 0.15MM
 9 0.15MM
 10 1.00MM
 100 0.70MM
 210 0.60MM

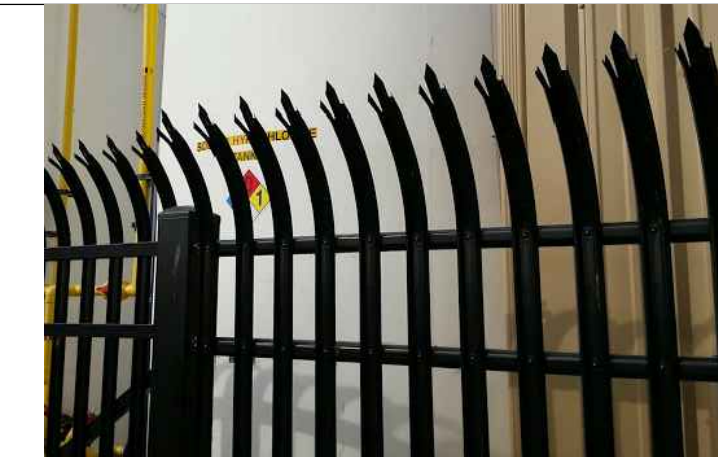
#	DESCRIPTION
1	2½" PALE
2	4" SQ POST
3	2" SQ x 12ga FRAME
4	V-GROOVE TRACK
5	TOP GUIDE ROLLERS
6	6" V-GROOVE WHEEL
7	2" x 4" LOWER TUBE



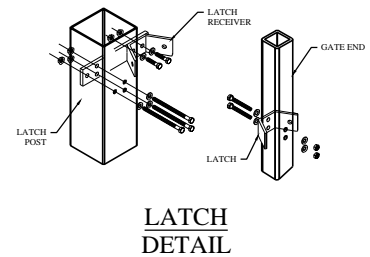
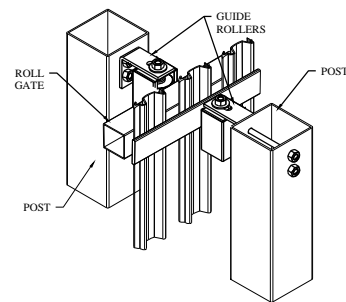
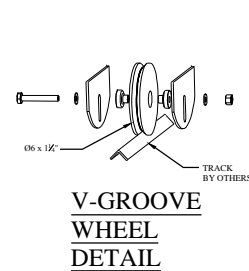
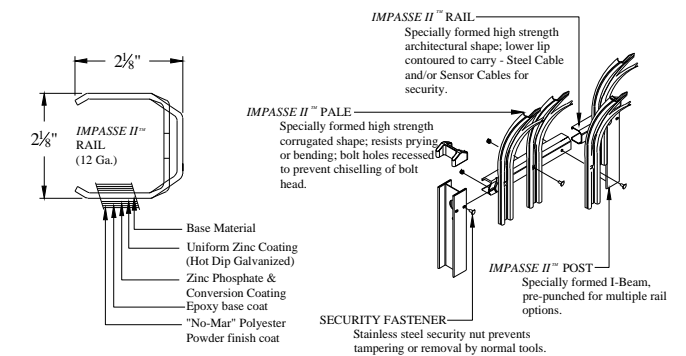
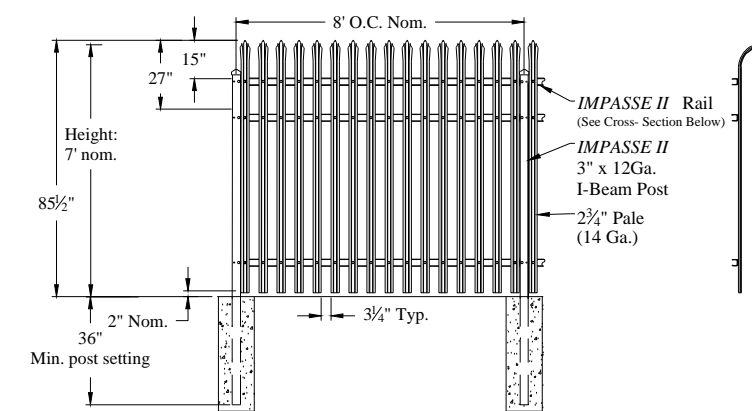
Values shown are nominal and not to be used for installation purposes. See product specification for installation requirements.

SWING GATES 2

N.T.S.



Values shown are nominal and not to be used for installation purposes. See product specification for installation requirements.



ROLLING GATE 1

N.T.S.

NOTES (Apply to all fence panels and Gates):

- 1.) Post size depends on fence height, weight and wind loads. See IMPASSE II post sizing chart.
- 2.) See Ameristar gate table for standard out to outs.
- 3.) Additional styles of gate hardware are available on District's request. This could change the Latch & Hinge Clearance.
- 4.) All fence panels and gates shall have a Third Rail.
- 5.) All gates and gate tracks shall be mounted level and plumb to within manufacturer's recommended tolerances.

MODEL IMPASSE II
GAUNLET FENCE BY
AMERISTAR
(1-888-333-3422)
OR APPROVED EQUAL

FENCE DETAILS 3

N.T.S.

JOB NO. 22300-01

LAS GALLINAS VALLEY SANITARY DISTRICT
MARIN COUNTY, CALIFORNIA

RAFAEL MEADOWS PUMP STATION
FENCING IMPROVEMENTS

FENCE AND GATE DETAILS
(TYPE B - GAUNTLET FENCING)

CHECKED	DRAWN	SCALE
M. CORTEZ	-	SHOWN
APPROVED	DESIGNED	DATE
CURTIS PAXTON	M. CORTEZ	8/27/24
GENERAL MANAGER	DISTRICT ENGINEER	
CURTIS PAXTON	MICHAEL P. CORTEZ	
	RCE # 54039	

IF THIS DOES NOT MEASURE
ONE INCH, THESE PLANS ARE
NOT TO SCALE.

NO.	DATE	DESCRIPTION	BY	APPROV
REVISIONS				
3				

PLOT: EXTEND
SCALE: 1:1
BORDER:
22,34
COLOR: No.
RED 0.70MM
YELLOW 0.20MM
GREEN 0.25MM
CYAN 0.40MM
BLUE 0.50MM
MAGENTA 0.20MM
WHITE 0.35MM
GRAY 0.15MM
9 0.15MM
10 1.00MM
100 0.70MM
210 0.60MM

FILE:

FD14-ADDENDUM 1

FOR REDUCED PLANS ORIGINAL SCALE IS IN INCHES 0 1 2 3 4

RAFAEL MEADOWS PUMP STATION FENCING IMPROVEMENTS